



BLISSFIELD COMMUNITY SCHOOLS

BLISSFIELD HIGH SCHOOL

*630 South Lane St. • Blissfield, Michigan 49228
(517) 486-2148 • Fax (517) 486-4749*

Scott D. Moellenberndt, Superintendent
Jerry R. Johnson, High School Principal

August 20, 2012

Dear Parents and Community Members:

We are pleased to present you with the Annual Education Report (AER) which provides key information on the 2011-2012 educational progress for Blissfield High School. The AER addresses the complex reporting information required by federal and state laws. The school's report contains information about student assessment, Adequate Yearly Progress (AYP) and teacher quality. If you have any questions about the AER, please contact high school principal, Jerry Johnson for assistance.

The AER is available for you to review electronically by visiting the following web site www.blissfieldschools.us or a copy is available for your review in the high school office.

Blissfield High School achieved Adequate Yearly Progress (AYP) in English language arts and mathematics during the 2011 – 2012 school year. Additionally, one hundred percent of the teaching staff at Blissfield High School is “Highly Qualified” as defined by “No Child Left Behind.” We are continuously working to help our students reach their maximum potential and are pleased to have obtained these goals. We appreciate the continued support of parents, staff and our community in this effort.

State law requires that we also report the following information:

1. PROCESS FOR ASSIGNING PUPILS TO THE SCHOOL

Students are assigned to class and grade by the principal after consultation with relevant staff. Blissfield High School also participates in the schools of choice provisions in Section 105 and 105c of the State School Aid Act which are designed to allow local school districts to enroll nonresident students and count them in membership without having to obtain approval from the district of residence. Section 105 permits local school districts to enroll students who reside in other local school districts within the same intermediate school district. Section 105c allows enrollment of students who reside in school districts located in contiguous intermediate school districts.

2. THE STATUS OF THE 3-5 YEAR SCHOOL IMPROVEMENT PLAN

Having met the requirements established by the AdvancED Accreditation Commission and the North Central Association Commission on Accreditation and School Improvement, Blissfield High School has been fully accredited through June 30, 2015. The district was one of a select few in the state to earn District Accreditation Status. Blissfield High School will continue to monitor progress and set goals on an annual basis for its School Improvement Plan.

3. A BRIEF DESCRIPTION OF EACH SPECIALIZED SCHOOL

The students of Blissfield High School receive special education services through the Lenawee Intermediate School District (LISD). In addition to the specialized schools, students receive diagnostic testing, school psychology, school social work, physical and occupational therapy, career technical education, special needs training and speech pathology services.

The Lenawee Intermediate School District provides educational services to students from birth through age 26 who have severe handicaps. Students with severe physical, mental, emotional or sensory impairments may receive their educational program at a classroom operated by the LISD.

Local districts also operate special education classrooms open to students from other districts. Blissfield High School placed four students with Britton Deerfield Schools during the 2011-12 school year.

The LISD operates the Laura Haviland Program for elementary, middle and high school students with severe emotional and behavioral impairments. Two students from Blissfield High School attended Laura Haviland during the 2011-12 school year.

In cooperation with the Lenawee County Probate Court, the LISD operates the juvenile education program housed at the Maurice Spear Campus.

LISD operates special education classrooms in local districts including classrooms for students with physical or other health impairments and hearing impairments in Madison; and classrooms for students with cognitive impairments in Tecumseh and Adrian.

The LISD PREP Academy provides educational programs for teen parents from Lenawee County. During the student's instructional program, childcare support is provided. Two students from Blissfield High School attended the LISD PREP Academy during the 2011-12 school year.

The LISD TECH Center offers career technical education programs for high school juniors and seniors. Sixty-eight students from Blissfield High School attended the LISD TECH Center or participated in the co-op/work experience program during 2011-12. This equals 38.4% of the junior and senior population for this school district.

The most recent follow-up of LISD TECH Center students (a 2011 study of 2010 graduates) showed 75.8% were continuing their education. Of those continuing their education, 73% were continuing in a field related to their LISD TECH Center program. In addition, 80.3% were working (full-time or

part-time) with 1.6% reporting they were seeking employment. Of those working full-time, 48.8% were in a field related to their LISD TECH Center program.

Blissfield High School students are eligible for College Courses/Dual Enrollment if they meet all the conditions as outlined in the student handbook. The school district is required to pay the lesser of: (a) the actual charge for tuition; or (b) the state portion of the students' foundation allowance, adjusted to the proportion of the school year they attend the post-secondary institution.

College Visits are allowed for juniors and seniors. Students are allowed up to two days absence each year and the absences will be excused provided that the proper forms and notice are given to the teachers and the office.

4. IDENTIFY HOW TO ACCESS A COPY OF THE CORE CURRICULUM, A DESCRIPTION OF ITS IMPLEMENTATION AND AN EXPLANATION OF THE VARIANCES FROM THE STATE'S MODEL

Copies of the core curriculum are available for review in the high school office. The curriculum implemented by Blissfield High School is modeled after the Michigan Merit Curriculum.

5. THE AGGREGATE STUDENT ACHIEVEMENT RESULTS FOR ANY LOCAL COMPETENCY TESTS OR NATIONALLY NORMED ACHIEVEMENT TESTS

Please see the attached test results.

6. IDENTIFY THE NUMBER AND PERCENT OF STUDENTS REPRESENTED BY PARENTS AT PARENT-TEACHER CONFERENCES

November 17, 2011

Total for all sessions - 223 out of 367 or 61%.

	<u>AM</u>	<u>Afternoon PM</u>		<u>Total</u>	<u># in Class</u>	<u>Percent</u>
9 th	25	13	30	68	108	63%
10 th	25	13	24	62	88	70%
11 th	19	11	17	47	91	52%
12 th	12	11	23	46	80	58%

April 19, 2012

Total Attendance - 134 out of 364 = 37%

	<u>a.m.</u>	<u>Afternoon</u>	<u>Evening</u>	<u>Total</u>	<u>Number in class</u>	<u>Percent</u>
9 th	12	8	2	41	107	38
10 th	9	8	16	33	86	38
11 th	18	5	15	38	92	41
12 th	3	4	15	22	79	28

7. FOR HIGH SCHOOLS ONLY ALSO REPORT ON THE FOLLOWING:

a. THE NUMBER AND PERCENT OF POSTSECONDARY ENROLLMENTS (DUAL ENROLLMENT)

Thirteen students or approximately seven percent of the junior and senior class took advantage of dual enrollment opportunities during the 2011 - 2012 school year.

b. THE NUMBER OF COLLEGE EQUIVALENT (AP/IB) COURSES OFFERED

Blissfield High School offered AP Chemistry, AP English, AP History and AP Physics during the 2011 – 2012 school year.

c. THE NUMBER AND PERCENTAGE OF STUDENTS ENROLLED IN COLLEGE EQUIVALENT COURSES (AP/IB)

Forty - nine Blissfield High School students enrolled in AP courses during the 2011 - 2012 school year.

d. THE NUMBER AND PERCENTAGE OF STUDENTS RECEIVING A SCORE LEADING TO COLLEGE CREDIT

Forty-four AP exams were taken by Blissfield students with fifteen (34%) earning a score for college credit.

From the Principal

I would like to thank you for taking the time to read our Annual Report. We are proud of the gains that we have made during the 2011 -2012 school year and we continue to strive for educational excellence. We also take pride in being a well-rounded school where students find success both inside and outside of the classroom. We prepare our students academically in order to be competitive in a global society while providing opportunities for leadership and personal growth. We believe that our academic programs are second to none, offering Advanced Placement, dual enrollment, and career and technical education opportunities.

I invite you to visit our school and discover that which sets a Blissfield High School education apart from all others.

Sincerely,

Jerry R. Johnson
Principal



College Readiness Letter for
BLISSFIELD COMMUNITY HIGH SCH

August 22, 2012
 Code: 230345

PRINCIPAL
 BLISSFIELD COMMUNITY HIGH SCH
 630 S LANE ST
 BLISSFIELD, MI 49228



011061110

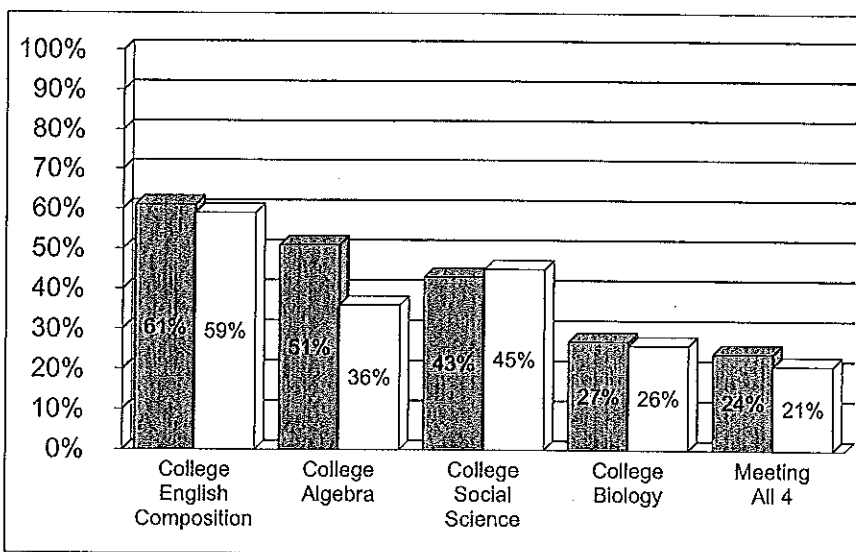
This report reflects the achievement of your graduates on the ACT over time and an indication of the extent to which they are prepared for college-level work. The ACT consists of curriculum-based tests of educational development in English, mathematics, reading, and science designed to measure the skills needed for success in first year college coursework. Table 1 shows the five-year trend of your ACT-tested graduates. From this table you can determine:

- Changes in the number and percentage of participants
- Score changes in subject areas and the ACT composite
- How your graduates compare with state averages

Table 1: Five Year Trends - Average ACT Scores

Grad Year	Total Tested		English		Mathematics		Reading		Science		Composite	
	School	State	School	State	School	State	School	State	School	State	School	State
2008	95	123,918	18.5	18.7	20.7	19.5	20.6	19.8	20.5	19.9	20.2	19.6
2009	100	121,982	19.1	18.6	20.2	19.6	20.2	19.6	20.8	20.1	20.3	19.6
2010	84	120,930	19.9	18.9	20.5	19.7	21.2	19.7	20.9	19.9	20.7	19.7
2011	77	116,823	20.1	19.3	21.6	19.9	21.5	20.1	21.7	20.3	21.3	20.0
2012	75	114,727	19.0	19.3	21.0	20.1	20.0	20.0	20.3	20.4	20.2	20.1

Figure 1. Percent of ACT-Tested Students Ready for College-Level Coursework



Are Your Students Ready for College?

While students will pursue a variety of paths after high school, all students should be prepared for college and work. Through collaborative research with postsecondary institutions nationwide, ACT has established the following as college readiness benchmark scores for designated college courses:

- * English Composition: 18 on ACT English Test
- * Algebra: 22 on ACT Mathematics Test
- * Social Science: 21 on ACT Reading Test
- * Biology: 24 on ACT Science Test

■ Your School
 □ State

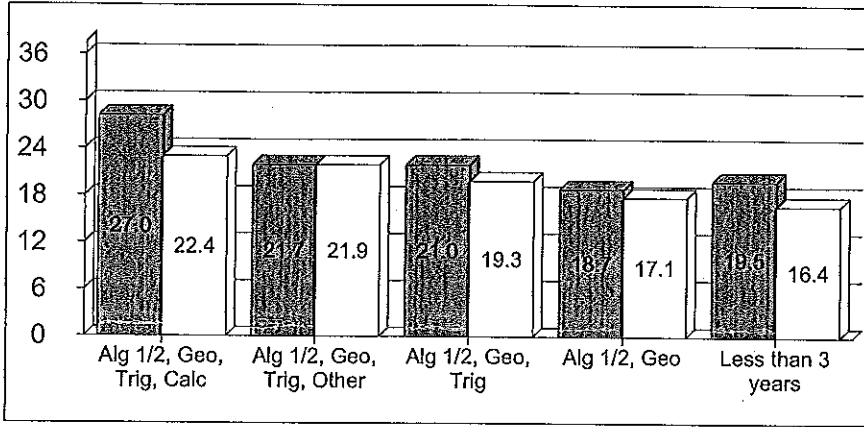
A benchmark score is the minimum score needed on an ACT subject-area test to indicate a 50% chance of obtaining a B or higher or about a 75% chance of obtaining a C or higher in the corresponding credit-bearing college courses.

A District College Readiness Letter has been sent to the Superintendent of the district.

College Readiness Letter for BLISSFIELD COMMUNITY HIGH SCH

ACT Research has shown that it is the rigor of coursework - rather than simply the number of core courses - that has the greatest impact on ACT performance and college readiness. Figures 2 and 3 report the value added by increasingly rigorous coursework in mathematics and science respectively.

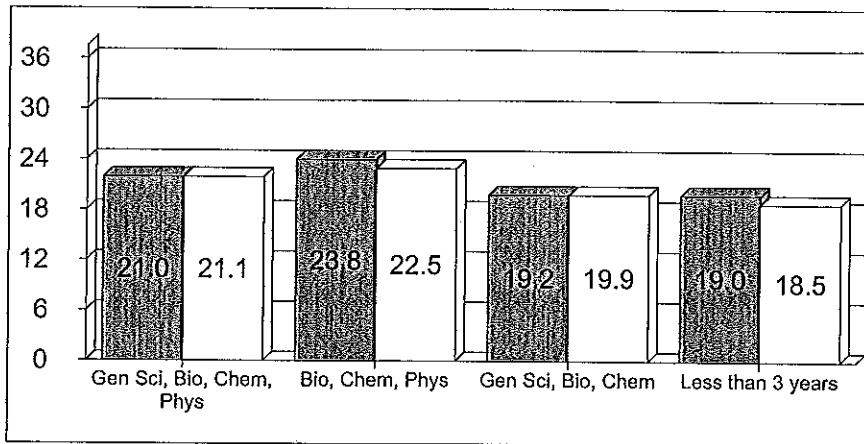
Figure 2. Average ACT Mathematics Scores by Course Sequence



Value Added by Mathematics Courses

Students who take a minimum of Algebra 1, Algebra 2, and Geometry typically achieve higher ACT Mathematics scores than students who take less than three years of mathematics. In addition, students who take more advanced mathematics courses substantially increase their ACT Mathematics score.

Figure 3. Average ACT Science Scores by Course Sequence



Value Added by Science Courses

Students taking Biology and Chemistry in combination with Physics typically achieve higher ACT Science scores than students taking less than three years of science courses.

In order to ensure that all students are ready for college and work, an overview of vital action steps is provided.

College Readiness for All: An Action Plan for Schools and Districts

1. **Create a Common Focus.** Establish collaborative partnerships with local and state postsecondary institutions to come to a shared understanding of what students need to know for college and workplace readiness. Use ACT's College Readiness Standards and the ACT as a common language to define readiness.
2. **Establish High Expectations for All.** Create a school culture that identifies and communicates the need for all students to meet or exceed College Readiness Benchmark Scores.
3. **Require a Rigorous Curriculum.** Review and evaluate the rigor and alignment of courses offered and required in your school in English, mathematics, and science to ensure that the foundational skills leading to readiness for college-level work are taught, reaffirmed, and articulated across courses.
4. **Provide Student Counseling.** Engage all students in early college and career awareness, help them to set high aspirations, and ensure that they plan a rigorous high school coursework program.
5. **Measure and Evaluate Progress.** Monitor and measure every student's progress early and often using college readiness assessments like EXPLORE, PLAN and the ACT. Make timely interventions with those students who are not making adequate progress in meeting college readiness standards.

To learn more about these recommended action steps and ACT programs that will help improve college readiness for your students, contact your ACT Regional Director at 517-327-5919 or email midwest.region@act.org.

School-Level Combined Reports Data for Lenawee ISD, Blissfield Community Schools, Blissfield High School

Student Assessment Data - Michigan Educational Assessment Program (MEAP)

Subject	Grade	Student Group	School Year	% Students Tested	State % Students Proficient	District % Students Proficient	School % Students Proficient	% Advanced (Level 1)	% Proficient (Level 2)	% Partially Proficient (Level 3)	% Not Proficient (Level 4)
---------	-------	---------------	-------------	-------------------	-----------------------------	--------------------------------	------------------------------	----------------------	------------------------	----------------------------------	----------------------------

School-Level Combined Reports Data for Lenawee ISD, Blissfield Community Schools, Blissfield High School

Student Assessment Data - Michigan Merit Examination (MME)

Subject	Grade	Student Group	School Year	% Students Tested	State % Students Proficient	District % Students Proficient	School % Students Proficient	% Advanced (Level 1)	% Proficient (Level 2)	% Partially Proficient (Level 3)	% Not Proficient (Level 4)
English Language Arts / Reading	11	All Students	2010-11	100%	52.7%	53.7%	53.7%	11%	42.7%	32.9%	13.4%
English Language Arts / Reading	11	All Students	2011-12	96.8%	55.9%	51.1%	51.1%	7.8%	43.3%	28.9%	20%
English Language Arts / Reading	11	Asian	2010-11	<10	65.5%	<10	<10	<10	<10	<10	<10
English Language Arts / Reading	11	Hispanic or Latino	2010-11	<10	37.7%	<10	<10	<10	<10	<10	<10
English Language Arts / Reading	11	White	2010-11	100%	59.5%	55.1%	55.1%	10.3%	44.9%	33.3%	11.5%
English Language Arts / Reading	11	White	2011-12	96.8%	62.4%	51.1%	51.1%	7.8%	43.3%	28.9%	20%
English Language Arts / Reading	11	Female	2010-11	100%	55.1%	53.7%	53.7%	12.2%	41.5%	31.7%	14.6%
English Language Arts / Reading	11	Female	2011-12	97.6%	60.4%	56.1%	56.1%	2.4%	53.7%	26.8%	17.1%
English Language Arts / Reading	11	Male	2010-11	100%	50.3%	53.7%	53.7%	9.8%	43.9%	34.1%	12.2%
English Language Arts / Reading	11	Male	2011-12	96.1%	51.4%	46.9%	46.9%	12.2%	34.7%	30.6%	22.4%
English Language Arts / Reading	11	Economically Disadvantaged	2010-11	100%	35.1%	56%	56%	4%	52%	28%	16%
English Language Arts / Reading	11	Economically Disadvantaged	2011-12	100%	39.9%	40%	40%	3.3%	36.7%	36.7%	23.3%
English Language Arts / Reading	11	Students with Disabilities	2010-11	100%	16.9%	9.1%	9.1%	9.1%	0%	36.4%	54.5%
English Language Arts / Reading	11	Students with Disabilities	2011-12	100%	19.4%	7.7%	7.7%	0%	7.7%	38.5%	53.8%
Mathematics	11	All Students	2010-11	100%	27.3%	35.4%	35.4%	1.2%	34.1%	39%	25.6%

School-Level Combined Reports Data for Lenawee ISD, Blissfield Community Schools, Blissfield High School

Student Assessment Data - Michigan Merit Examination (MME)

Subject	Grade	Student Group	School Year	% Students Tested	State % Students Proficient	District % Students Proficient	School % Students Proficient	% Advanced (Level 1)	% Proficient (Level 2)	% Partially Proficient (Level 3)	% Not Proficient (Level 4)
Mathematics	11	All Students	2011-12	96.8%	29.1%	31.1%	31.1%	3.3%	27.8%	42.2%	26.7%
Mathematics	11	Asian	2010-11	<10	58.3%	<10	<10	<10	<10	<10	<10
Mathematics	11	Hispanic or Latino	2010-11	<10	14%	<10	<10	<10	<10	<10	<10
Mathematics	11	White	2010-11	100%	31.9%	35.9%	35.9%	1.3%	34.6%	41%	23.1%
Mathematics	11	White	2011-12	96.8%	33.6%	31.1%	31.1%	3.3%	27.8%	42.2%	26.7%
Mathematics	11	Female	2010-11	100%	25.4%	39%	39%	0%	39%	31.7%	29.3%
Mathematics	11	Female	2011-12	97.6%	26.9%	26.8%	26.8%	0%	26.8%	43.9%	29.3%
Mathematics	11	Male	2010-11	100%	29.1%	31.7%	31.7%	2.4%	29.3%	46.3%	22%
Mathematics	11	Male	2011-12	96.1%	31.2%	34.7%	34.7%	6.1%	28.6%	40.8%	24.5%
Mathematics	11	Economically Disadvantaged	2010-11	100%	11.6%	32%	32%	0%	32%	28%	40%
Mathematics	11	Economically Disadvantaged	2011-12	100%	13.4%	13.3%	13.3%	3.3%	10%	40%	46.7%
Mathematics	11	Students with Disabilities	2010-11	100%	3.6%	9.1%	9.1%	0%	9.1%	9.1%	81.8%
Mathematics	11	Students with Disabilities	2011-12	100%	3.9%	7.7%	7.7%	0%	7.7%	7.7%	84.6%

School-Level Combined Reports Data for Lenawee ISD, Blissfield Community Schools, Blissfield High School

Student Assessment Data - MI-Access : Functional Independence

Subject	Grade	Student Group	School Year	% Students Tested	State % Students Proficient	District % Students Proficient	School % Students Proficient	% Surpassed (Level 1)	% Attained (Level 2)	% Emerging (Level 3)
Mathematics	11	All Students	2010-11	<10	68.7%	<10	<10	<10	<10	<10
Mathematics	11	Hispanic or Latino	2010-11	<10	73.7%	<10	<10	<10	<10	<10
Mathematics	11	Female	2010-11	<10	65.1%	<10	<10	<10	<10	<10
Science	11	All Students	2010-11	<10	59.2%	<10	<10	<10	<10	<10
Science	11	Hispanic or Latino	2010-11	<10	63.2%	<10	<10	<10	<10	<10
Science	11	Female	2010-11	<10	58.1%	<10	<10	<10	<10	<10

School-Level Combined Reports Data for Lenawee ISD, Blissfield Community Schools, Blissfield High School

Student Assessment Data - MI-Access : Supported Independence

Subject	Grade	Student Group	School Year	% Students Tested	State % Students Proficient	District % Students Proficient	School % Students Proficient	% Surpassed (Level 1)	% Attained (Level 2)	% Emerging (Level 3)
---------	-------	---------------	-------------	-------------------	-----------------------------	--------------------------------	------------------------------	-----------------------	----------------------	----------------------

School-Level Combined Reports Data for Lenawee ISD, Blissfield Community Schools, Blissfield High School

Student Assessment Data - MI-Access : Participation

Subject	Grade	Student Group	School Year	% Students Tested	State % Students Proficient	District % Students Proficient	School % Students Proficient	% Surpassed (Level 1)	% Attained (Level 2)	% Emerging (Level 3)
---------	-------	---------------	-------------	-------------------	-----------------------------	--------------------------------	------------------------------	-----------------------	----------------------	----------------------

School-Level Combined Reports Data for Lenawee ISD, Blissfield Community Schools, Blissfield High School

Student Assessment Data - MEAP-Access

Subject	Grade	Student Group	School Year	% Students Tested	State % Students Proficient	District % Students Proficient	School % Students Proficient	% Level 1	% Level 2	% Level 3
---------	-------	---------------	-------------	-------------------	-----------------------------	--------------------------------	------------------------------	-----------	-----------	-----------

School-Level Combined Reports Data for Lenawee ISD, Blissfield Community Schools, Blissfield High School

AYP Detail Data

Student Group	Location	Subject	% Tested (Goal 95%)	% Proficient for AYP*
All Students	State	English Language Arts / Reading	98.8%	82.9%
All Students	State	Mathematics	98.5%	57.5%
All Students	District	English Language Arts / Reading	99%	85.6%
All Students	District	Mathematics	98.8%	64.4%
All Students	School	English Language Arts / Reading	96.8%	72.7%
All Students	School	Mathematics	96.8%	47.7%
American Indian or Alaska Native	State	English Language Arts / Reading	97.7%	78.6%
American Indian or Alaska Native	State	Mathematics	97.5%	47.4%
American Indian or Alaska Native	District	English Language Arts / Reading	<30	<30
American Indian or Alaska Native	District	Mathematics	<30	<30
Asian, Native Hawaiian, or Pacific Islander	State	English Language Arts / Reading	100.6%	89.8%
Asian, Native Hawaiian, or Pacific Islander	State	Mathematics	99.3%	80.1%
Asian, Native Hawaiian, or Pacific Islander	District	English Language Arts / Reading	<30	<30
Asian, Native Hawaiian, or Pacific Islander	District	Mathematics	<30	<30
Black or African American	State	English Language Arts / Reading	96.9%	67.4%
Black or African American	State	Mathematics	96.4%	32.2%
Black or African American	District	English Language Arts / Reading	<30	<30
Black or African American	District	Mathematics	<30	<30
Hispanic or Latino	State	English Language Arts / Reading	99%	75.8%
Hispanic or Latino	State	Mathematics	98.5%	44.6%
Hispanic or Latino	District	English Language Arts / Reading	100%	87.5%
Hispanic or Latino	District	Mathematics	100%	45%
Two or More Races	State	English Language Arts / Reading	99.1%	83.6%
Two or More Races	State	Mathematics	99%	54.9%
Two or More Races	District	English Language Arts / Reading	<30	<30
Two or More Races	District	Mathematics	<30	<30
White	State	English Language Arts / Reading	99.2%	86.9%
White	State	Mathematics	99%	63.9%
White	District	English Language Arts / Reading	98.9%	85.3%
White	District	Mathematics	98.7%	66%
White	School	English Language Arts / Reading	96.8%	72.7%
White	School	Mathematics	96.8%	47.7%
Economically Disadvantaged	State	English Language Arts / Reading	98.3%	74.4%
Economically Disadvantaged	State	Mathematics	97.9%	43.3%
Economically Disadvantaged	District	English Language Arts / Reading	99.6%	76.6%
Economically Disadvantaged	District	Mathematics	99.2%	46.4%
Economically Disadvantaged	School	English Language Arts / Reading	100%	64.3%

School-Level Combined Reports Data for Lenawee ISD, Blissfield Community Schools, Blissfield High School

AYP Detail Data

Student Group	Location	Subject	% Tested (Goal 95%)	% Proficient for AYP*
Economically Disadvantaged	School	Mathematics	100%	28.6%
Students with Disabilities	State	English Language Arts / Reading	97.7%	51.5%
Students with Disabilities	State	Mathematics	97.3%	32%
Students with Disabilities	District	English Language Arts / Reading	96.2%	47.1%
Students with Disabilities	District	Mathematics	94.9%	23.5%
Students with Disabilities	School	English Language Arts / Reading	<30	<30
Students with Disabilities	School	Mathematics	<30	<30

Note: 1037 Recently arrived LEP students took part in the State's ELPA instead of the MEAP/MME/MI-Access.

School-Level Combined Reports Data for Lenawee ISD, Blissfield Community Schools, Blissfield High School

AYP Detail Data - Graduation Rate

Student Group	Location	Graduation Rate (High Schools only) (Goal 80%)
All Students	State	79.2%
All Students	District	>95%
All Students	School	>95%
American Indian or Alaska Native	State	68.49%
Asian	State	90.49%
Asian	District	<10
Asian	School	<10
Black or African American	State	62.56%
Hispanic or Latino	State	68.31%
Hispanic or Latino	District	<10
Hispanic or Latino	School	<10
Migrant	State	73.33%
Native Hawaiian or Other Pacific Islander	State	71.79%
Two or More Races	State	73.44%
White	State	84.81%
White	District	>95%
White	School	>95%
Female	State	83.17%
Female	District	>95%
Female	School	>95%
Male	State	75.45%
Male	District	>95%
Male	School	>95%
Economically Disadvantaged	State	67.16%
Economically Disadvantaged	District	94.44%
Economically Disadvantaged	School	94.44%
Students with Disabilities	State	64.79%
Students with Disabilities	District	>95%
Students with Disabilities	School	>95%

* All data based on students enrolled for a full academic year.

School-Level Combined Reports Data for Lenawee ISD, Blissfield Community Schools, Blissfield High School

AYP Detail Data - Attendance Rate

Student Group	Location	Attendance Rate (Goal 90%)
All Students	State	94.8%
All Students	District	97.1%
All Students	School	95.5%
American Indian or Alaska Native	State	94.1%
American Indian or Alaska Native	District	94.4%
Asian, Native Hawaiian, or Pacific Islander	State	96.4%
Asian, Native Hawaiian, or Pacific Islander	District	94%
Asian, Native Hawaiian, or Pacific Islander	School	99.4%
Black or African American	State	91%
Black or African American	District	98.7%
Hispanic or Latino	State	94.3%
Hispanic or Latino	District	96.8%
Hispanic or Latino	School	84.2%
Two or More Races	State	95%
Two or More Races	District	18.3%
White	State	95.8%
White	District	97.2%
White	School	95.7%
Economically Disadvantaged	State	94.8%
Economically Disadvantaged	District	97.1%
Economically Disadvantaged	School	95.5%
Students with Disabilities	State	93.2%
Students with Disabilities	District	95.8%
Students with Disabilities	School	93.9%

* All data based on students enrolled for a full academic year.

School-Level Combined Reports Data for Lenawee ISD, Blissfield Community Schools, Blissfield High School

Michigan Annual AYP Objectives for Reading/ELA

School Year	Grade 3	Grade 4	Grade 5	Grade 6	Grade 7	Grade 8	Grade 11
2001-02		38%			31%		42%
2002-03		38%			31%		42%
2003-04		38%			31%		42%
2004-05		48%			43%		52%
2005-06	50%	48%	46%	45%	43%	41%	52%
2006-07	50%	48%	46%	45%	43%	41%	52%
2007-08	60%	59%	57%	56%	54%	53%	61%
2008-09	60%	59%	57%	56%	54%	53%	61%
2009-10	70%	69%	68%	67%	66%	65%	71%
2010-11	78%	77%	76%	75%	74%	73%	79%
2011-12	86%	85%	84%	83%	82%	82%	86%
2012-13	93%	92%	92%	91%	91%	91%	93%
2013-14	100%	100%	100%	100%	100%	100%	100%

School-Level Combined Reports Data for Lenawee ISD, Blissfield Community Schools, Blissfield High School

Michigan Annual AYP Objectives for Mathematics

School Year	Grade 3	Grade 4	Grade 5	Grade 6	Grade 7	Grade 8	Grade 11
2001-02		47%					
2002-03		47%				31%	33%
2003-04		47%				31%	33%
2004-05		56%				43%	44%
2005-06	59%	56%	53%	50%	46%	43%	44%
2006-07	59%	56%	53%	50%	46%	43%	44%
2007-08	67%	65%	62%	60%	57%	54%	55%
2008-09	67%	65%	62%	60%	57%	54%	55%
2009-10	67%	65%	62%	60%	57%	54%	55%
2010-11	75%	74%	71%	70%	67%	66%	67%
2011-12	83%	82%	81%	80%	78%	77%	78%
2012-13	91%	91%	90%	90%	89%	89%	89%
2013-14	100%	100%	100%	100%	100%	100%	100%

School-Level Combined Reports Data for Lenawee ISD, Blissfield Community Schools, Blissfield High School

School AYP Status

Title 1 Status	AYP ELA/Reading Status	AYP Mathematics Status	AYP Overall Status	Education Yes Report Card Grade	School Status Indicator
No	Met	Met	Met	C	

School-Level Combined Reports Data for Lenawee ISD, Blissfield Community Schools, Blissfield High School

Teacher Quality Data

	Other	B.A.	M.A.	Ph.D
Professional Qualifications of All Public Elementary and Secondary School Teachers in the School	0	13	13	0

Professional Qualifications are defined by the State and may include information such as the degrees of public school teachers (e.g., percentage of teachers with Bachelors Degrees or Masters Degrees) or the percentage of fully certified teachers

School-Level Combined Reports Data for Lenawee ISD, Blissfield Community Schools, Blissfield High School

Teacher Quality Data

	Certification Percent
Percentage of Public Elementary and Secondary School Teachers in the School with Emergency Certification	3.8%

School-Level Combined Reports Data for Lenawee ISD, Blissfield Community Schools, Blissfield High School

Teacher Quality Data

	School Aggregate
Percentage of Core Academic Subject Elementary and Secondary School Classes not Taught by Highly Qualified Teachers	0%

School-Level Combined Reports Data for Lenawee ISD, Blissfield Community Schools, Blissfield High School

NAEP 2011 Grade 4 Mathematics Results

	Percent of Students	Percent below Basic	Percent Basic	Percent Proficient	Percent Advanced
All Students	100	22	43	30	5
Male	50	21	42	31	6
Female	50	22	45	29	4
National Lunch Program Eligibility					
Eligible	43	35	47	17	1
Not Eligible	56	11	41	41	8
Info not available					
Race Ethnicity					
White	71	14	45	36	5
Black	16	53	39	8	0
Hispanic	6	31	48	19	2
Asian	3	7	22	45	26
American Indian Native		‡	‡	‡	‡
Hawaiian/Pacific Islander	2	‡	‡	‡	‡
Two or More Races		23	50	21	6
Student classified as having a disability					
SD	13	50	37	13	1
Not SD	87	18	44	32	5
Student is an English Language Learner					
ELL	4	47	41	11	1
Not ELL	96	21	44	31	5

‡ Reporting Standards not met.

Note: Observed differences are not necessarily statistically significant. Detail may not sum to total because of rounding.

SOURCE: U.S. Department of Education, Institute for Education Sciences, National Center for Education Statistics, National Assessment Program (NAEP) 2011 Mathematics Achievement.

School-Level Combined Reports Data for Lenawee ISD, Blissfield Community Schools, Blissfield High School

NAEP 2011 Grade 8 Mathematics Results

	Percent of Students	Percent below Basic	Percent Basic	Percent Proficient	Percent Advanced
All Students	100	29	40	25	6
Male	51	28	39	26	7
Female	49	30	41	24	5
National Lunch Program Eligibility					
Eligible	42	45	39	15	2
Not Eligible	58	18	41	32	9
Info not available					
Race Ethnicity					
White	74	22	43	29	6
Black	16	66	26	7	0
Hispanic	4	26	41	18	5
Asian	3	13	25	31	32
American Indian	1	‡	‡	‡	‡
Native		‡	‡	‡	‡
Hawaiian/Pacific Islander	2	‡	‡	‡	‡
Two or More Races		‡	‡	‡	‡
Student classified as having a disability					
SD	12	70	23	5	1
Not SD	88	25	41	27	6
Student is an English Language Learner					
ELL	2	57	27	7	10
Not ELL	98	29	40	25	6

‡ Reporting Standards not met.

NOTE: Detail may not sum to totals because of rounding. Some apparent differences between estimates may not be statistically significant.

SOURCE: U.S. Department of Education. Institute for Education Sciences. National Center for Education Statistics. National Assessment Program (NAEP) 2011 Mathematics Achievement.

School-Level Combined Reports Data for Lenawee ISD, Blissfield Community Schools, Blissfield High School

NAEP 2011 Grade 4 Reading Results

	Percent of Students	Percent below Basic	Percent Basic	Percent Proficient	Percent Advanced
All Students	100	34	34	25	6
Male	50	38	33	24	6
Female	50	31	36	26	7
National Lunch Program Eligibility					
Eligible	45		32	15	2
Not Eligible	55	51	36	33	10
Info not available		21			
Race Ethnicity					
White	70	28	37	30	7
Black	17	67	24	7	1
Hispanic	6	51	29	17	3
Asian	3	19	33	33	15
American Indian	0	‡	‡	‡	‡
Native		‡	‡	‡	‡
Hawaiian/Pacific	2	‡	‡	‡	‡
Islander		36	31	19	14
Two or More Races					
Student classified as having a disability					
SD	13	73	17	8	2
Not SD	87	30	36	27	7
Student is an English Language Learner					
ELL	3	67	26	7	0
Not ELL	97	33	35	25	7

Rounds to zero

‡ Reporting Standards not met.

NOTE: Detail may not sum to totals because of rounding. Some apparent differences between estimates may not be statistically significant.
 SOURCE: U.S. Department of Education, Institute of Education Sciences, National Center for Education Statistics, National Assessment of Educational Progress (NAEP), 2011 Reading Assessment.

School-Level Combined Reports Data for Lenawee ISD, Blissfield Community Schools, Blissfield High School

NAEP 2011 Grade 8 Reading Results

	Percent of Students	Percent below Basic	Percent Basic	Percent Proficient	Percent Advanced
All Students	100	23	45	29	3
Male	50	28	47	24	2
Female	50	18	43	35	4
National Lunch Program Eligibility					
Eligible	42	35	46	18	0
Not Eligible	58	14	44	37	4
Info not available					
Race Ethnicity					
White	74	18	46	33	3
Black	16	46	43	10	0
Hispanic	4	25	50	25	1
Asian	3	19	27	39	14
American Indian	1	‡	‡	‡	‡
Native		‡	‡	‡	‡
Hawaiian/Pacific Islander	1	‡	‡	‡	‡
Two or More Races		‡	‡	‡	‡
Student classified as having a disability					
SD	12	67	27	6	0
Not SD	88	19	46	31	3
Student is an English Language Learner					
ELL	2	52	40	8	0
Not ELL	98	22	45	30	3

Rounds to zero

‡ Reporting Standards not met.

NOTE: Detail may not sum to totals because of rounding. Some apparent differences between estimates may not be statistically significant.
SOURCE: U.S. Department of Education, Institute of Education Sciences, National Center for Education Statistics, National Assessment of Educational Progress (NAEP), 2011 Reading Assessment.

School-Level Combined Reports Data for Lenawee ISD, Blissfield Community Schools, Blissfield High School

Grade	Subject	Participation Rate for Students with Disabilities	Standard Error	Participation Rate for Limited English Proficient Students	Standard Error
4	Math	85	2.0	73	3.3
		75	3.1	93	2.4
8	Math	73	2.5	83	4.7
		63	3.3	79	4.5