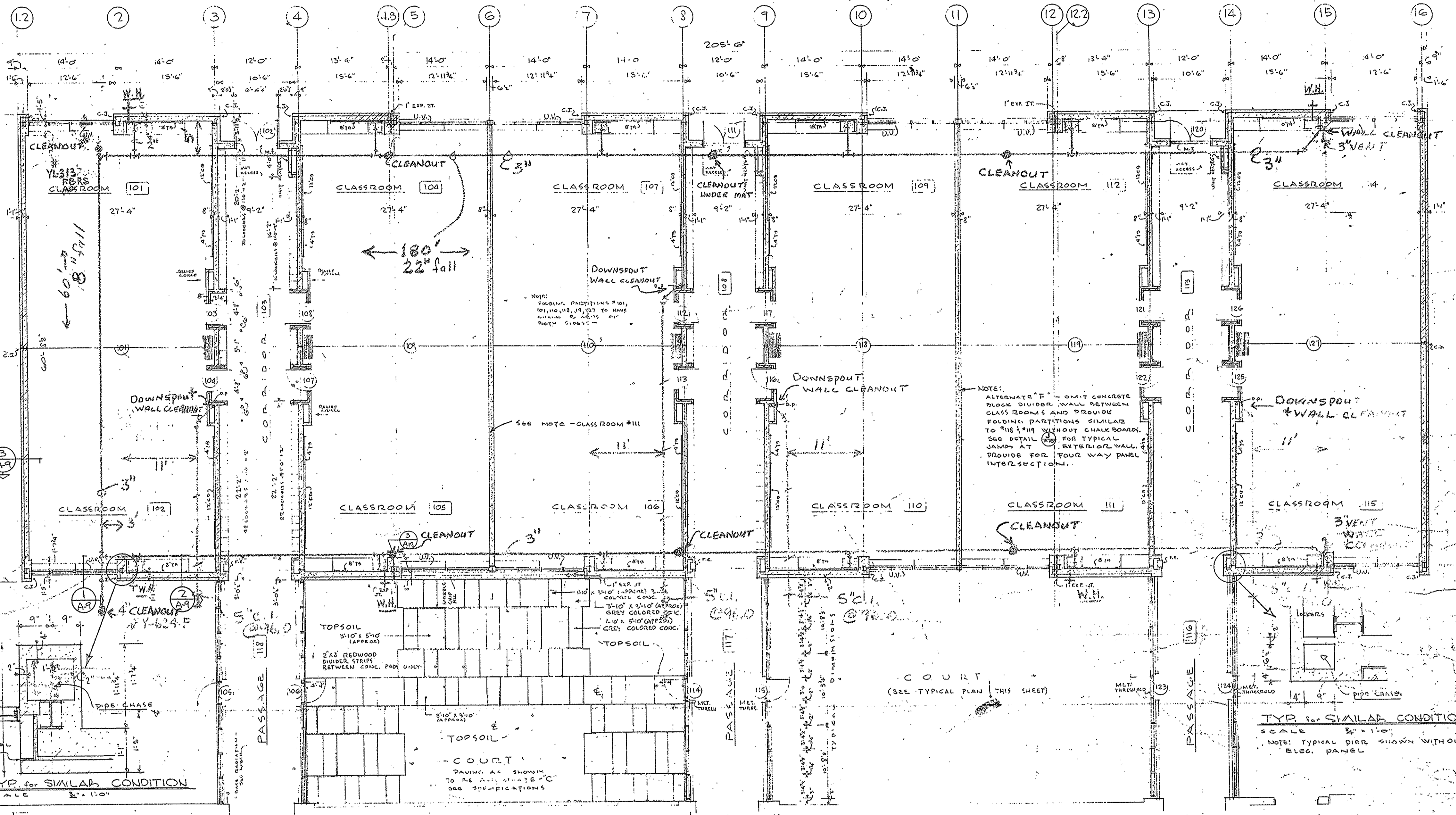
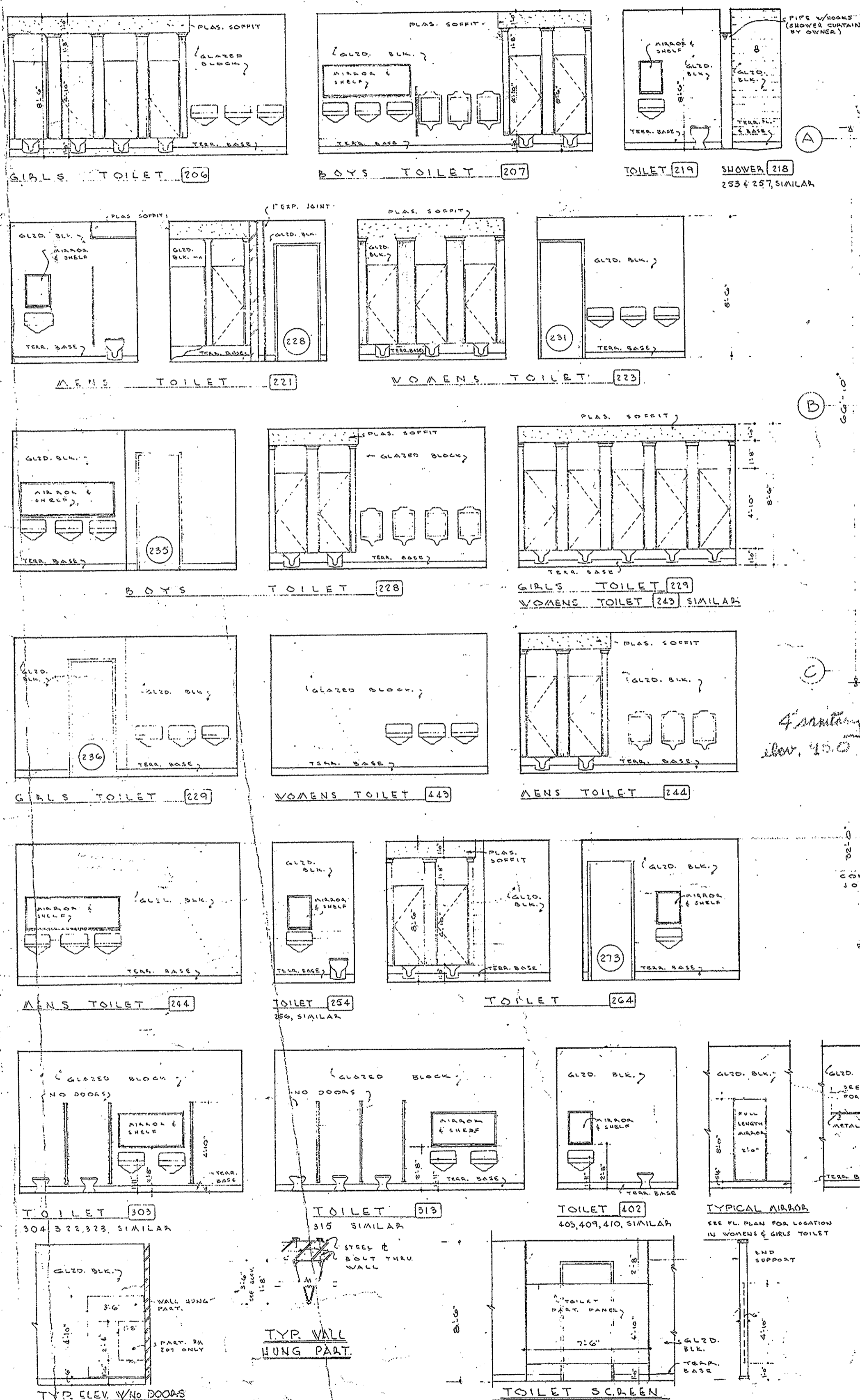
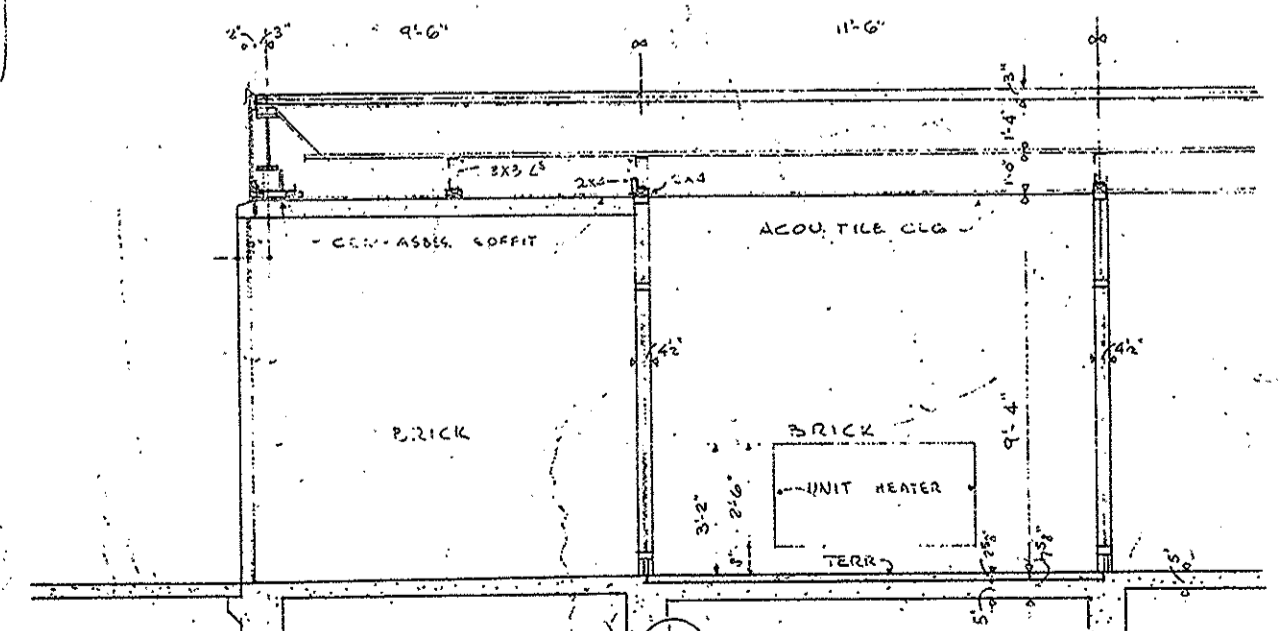


TOILET ELEVATIONS
PART II, III, IV



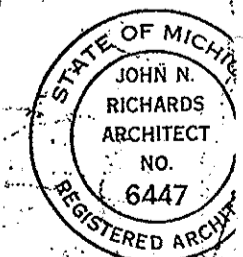
FLOOR PLAN - PART I
SCALE: 1/8" = 1'-0"



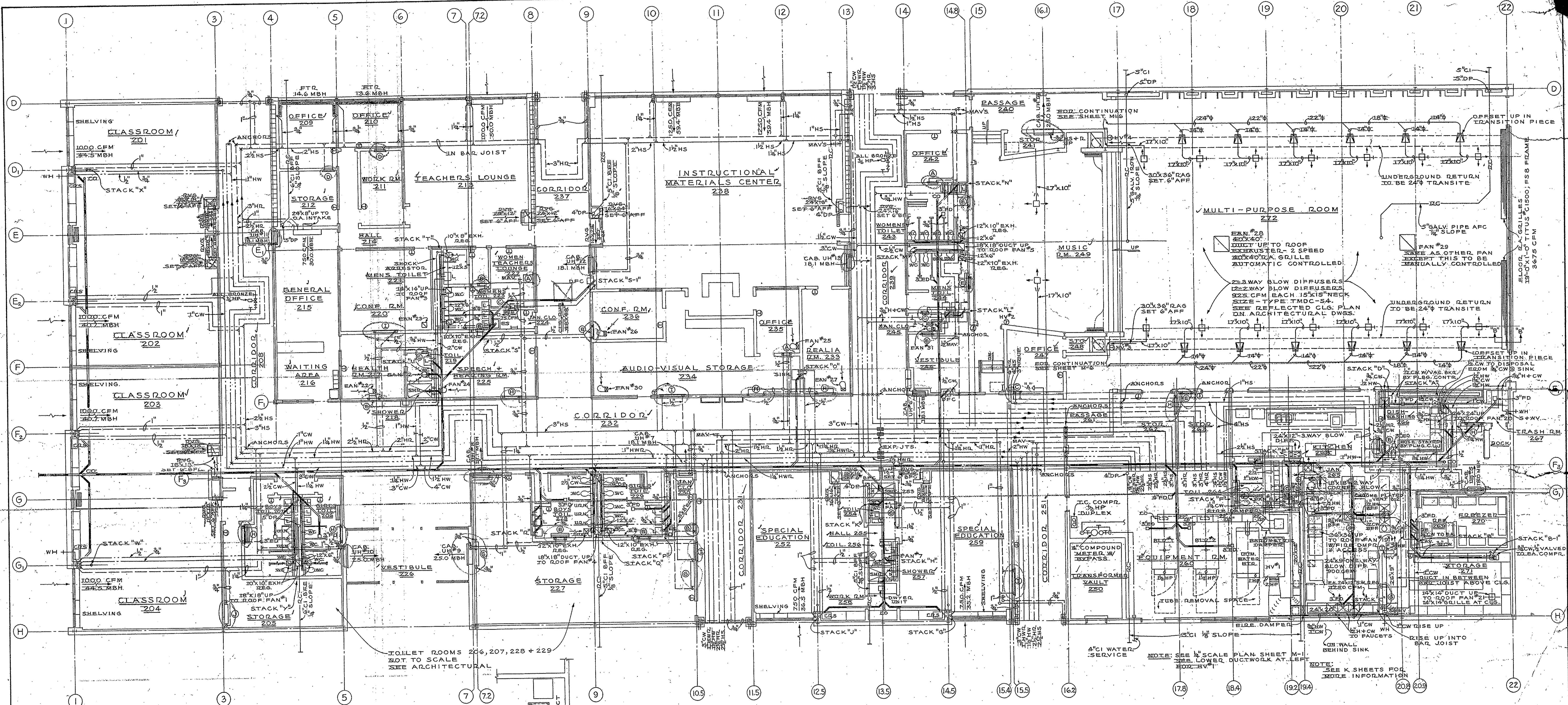
- 12 - Classroom sink's
- 6 - Wall hydrants
- 4 - 4" roof drains
- 1 - outside cleanout YL-624-F-4
- 2 - floor cleanouts - 3" #12 PANS
- 6 - Wall Cleanouts

UNDERGROUND PIPING
BLDG #1

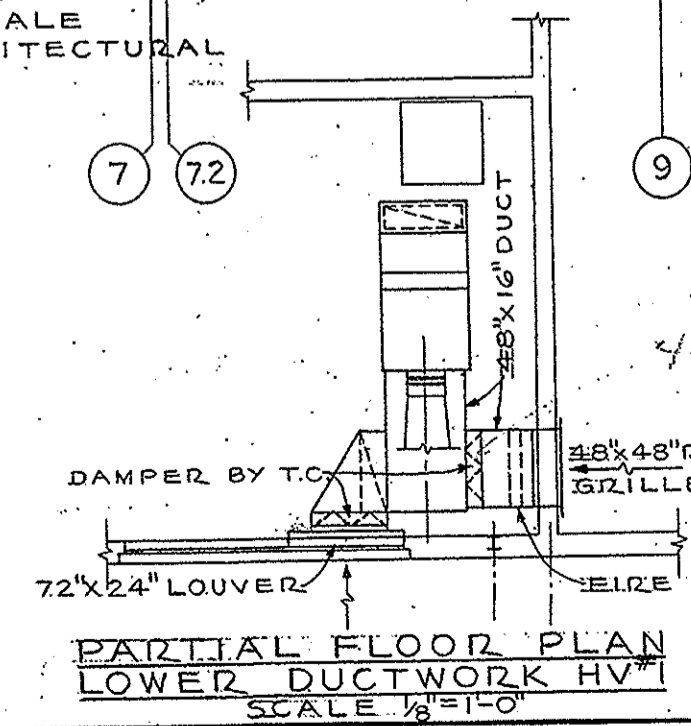
DATE	SHEET NO.	ELEMENTARY SCHOOL FOR BLISSFIELD COMMUNITY SCHOOL DISTRICT BLISSFIELD, LENAWEE COUNTY, MICHIGAN
10-27-65	A-3	
CHARACTER	SET OF	RICHARDS BAUER & MOORHEAD ARCHITECTS & ENGINEERS TOLEDO
NO. 5541	13	



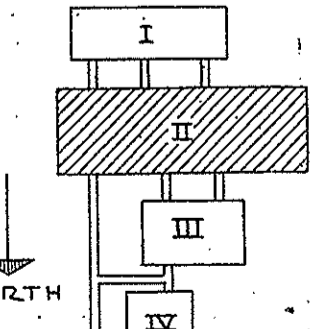
18 ROOMS (INCLUDES
CORRIDORS & PASSAGE)



TOILET ROOMS 206, 207, 228 + 229
NOT TO SCALE
SEE ARCHITECTURAL



NOTE:
ALL CEILING EXHAUST FANS THIS SECTION
ARE EMERSON-PRYNE FANS
CONSULT EXHAUST FAN SCHEDULE
10'x3 3/4" DUCT UP TO #5 ROOF JACK



FLOOR PLAN - PART II
SCALE 1/8" = 1'-0"

DATE	M-2	SHEET NO.	6	ELEMENTARY SCHOOL	FOR	BLISSFIELD COMMUNITY SCHOOL DISTRICT BLISSFIELD, LENAWEE COUNTY, MICHIGAN
REV. CHARACTER	5541					
DATE	10-22-65	DATE		TOLEDO		OHIO

STATE OF MICHIGAN
JOHN N. RICHARDS
ARCHITECT
NO. 6447
REGISTERED ARCHITECT