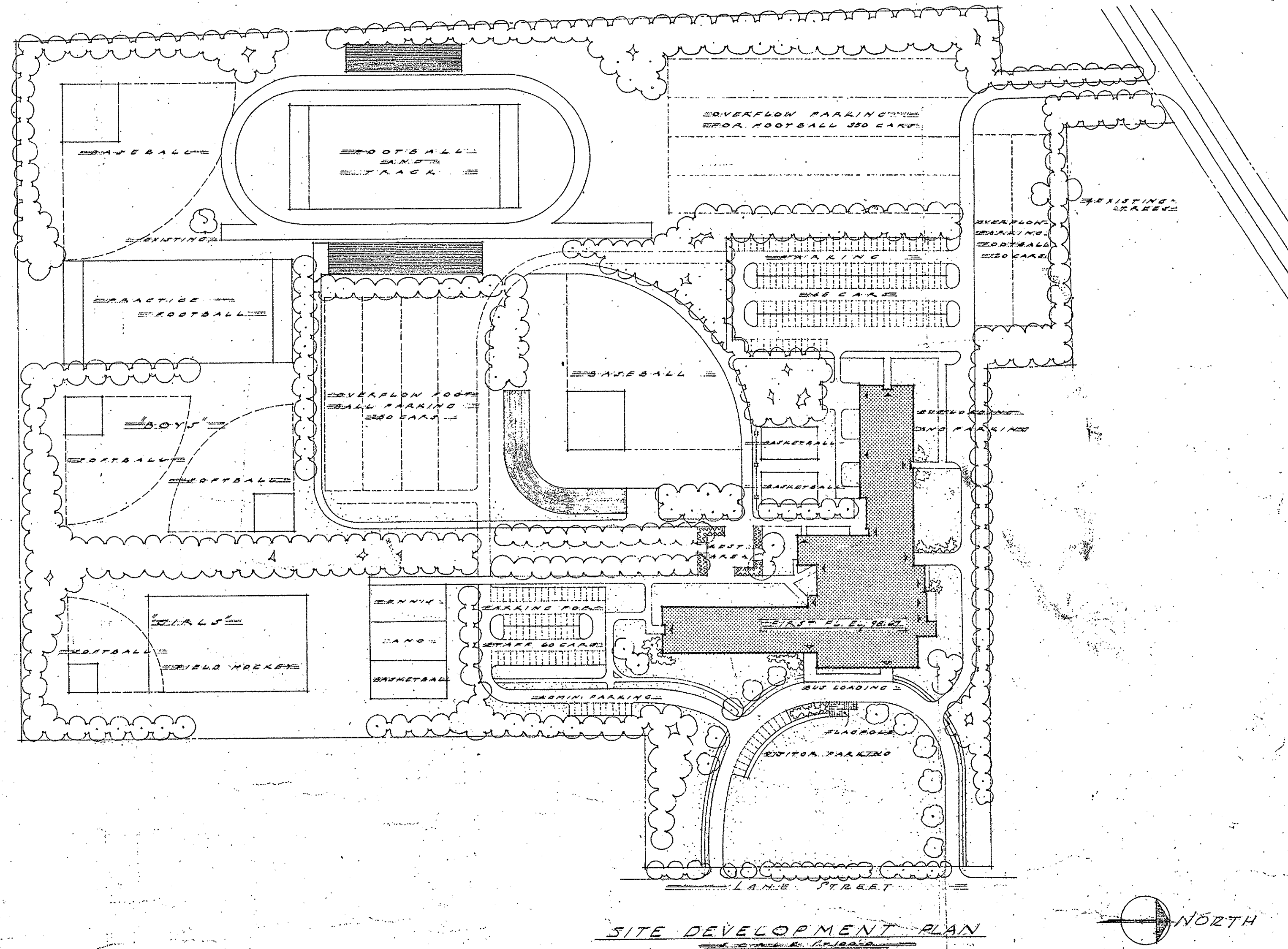


SHEET INDEX



ARCHITECTURAL

1. - SITE DEVELOPMENT PLAN
2. - GRADING & SITE PLAN
3. - FOUNDATION SECTIONS
4. - FOUNDATION & FLOOR PLANS - PART 'A'
5. - FOUNDATION PLAN - PART 'B'
6. - FLOOR PLAN - PART 'B'
7. - FOUNDATION & FLOOR PLANS - PART 'C'
8. - UPPER PLANS - GYMNASIUM & SHOPS. ROOF PLAN & DETAILS
9. - ROOM FINISH SCHEDULE
10. - EXTERIOR ELEVATIONS & WINDOW DETAILS
11. - BUILDING SECTIONS - PART 'A' & 'B'
12. - BUILDING SECTIONS - PART 'C' & CONSTRUCTION DETAILS
13. - CONSTRUCTION DETAILS
14. - CORRIDOR ELEVATIONS & DETAILS
15. - INTERIOR ELEVATIONS & DETAILS
16. - INTERIOR ELEVATIONS & DETAILS
17. - INTERIOR ELEVATIONS & DETAILS
18. - INTERIOR ELEVATIONS & DETAILS
19. - INTERIOR ELEVATIONS & DETAILS
- 19A. MISCELLANEOUS DETAILS

STRUCTURAL

20. - FLOOR & ROOF FRAMING - PART 'A'
21. - FLOOR FRAMING - PART 'B'
22. - ROOF FRAMING - PART 'B'
23. - FLOOR & ROOF FRAMING - PART 'C'
24. - SCHEDULES & DETAILS
- 24A. SCHEDULES & DETAILS

MECHANICAL

25. - FOUNDATION & FLOOR PLANS - HEATING - PART 'A'
26. - FOUNDATION PLAN - HEATING - PART 'A'
27. - FLOOR PLAN - HEATING - PART 'A'
28. - FOUNDATION & FLOOR PLANS - HEATING - PART 'C'
29. - UPPER PLAN of GYMNASIUM - HEATING & EXHAUST SCHEDULE
30. - RADIATION SCHEDULE
31. - PLUMBING SCHEDULE & HEATING DETAILS
32. - FOUNDATION & FLOOR PLANS - PLUMBING - PART 'A'
33. - FOUNDATION PLAN - PLUMBING - PART 'B'
34. - FLOOR PLAN - PLUMBING - PART 'B'
35. - FOUNDATION & FLOOR PLANS - PLUMBING - PART 'C'
36. - FOUNDATION & FLOOR PLANS - ELECTRICAL - PART 'A'
37. - FOUNDATION PLAN - ELECTRICAL - PART 'B'
38. - FLOOR PLAN - ELECTRICAL - PART 'B'
39. - FOUNDATION & FLOOR PLANS - ELECTRICAL - PART 'C'
40. - ELECTRICAL DIAGRAMS
41. - MECHANICAL DETAILS

A NEW HIGH SCHOOL
 BLISSFIELD COMMUNITY SCHOOL DISTRICT
 BLISSFIELD, MICHIGAN

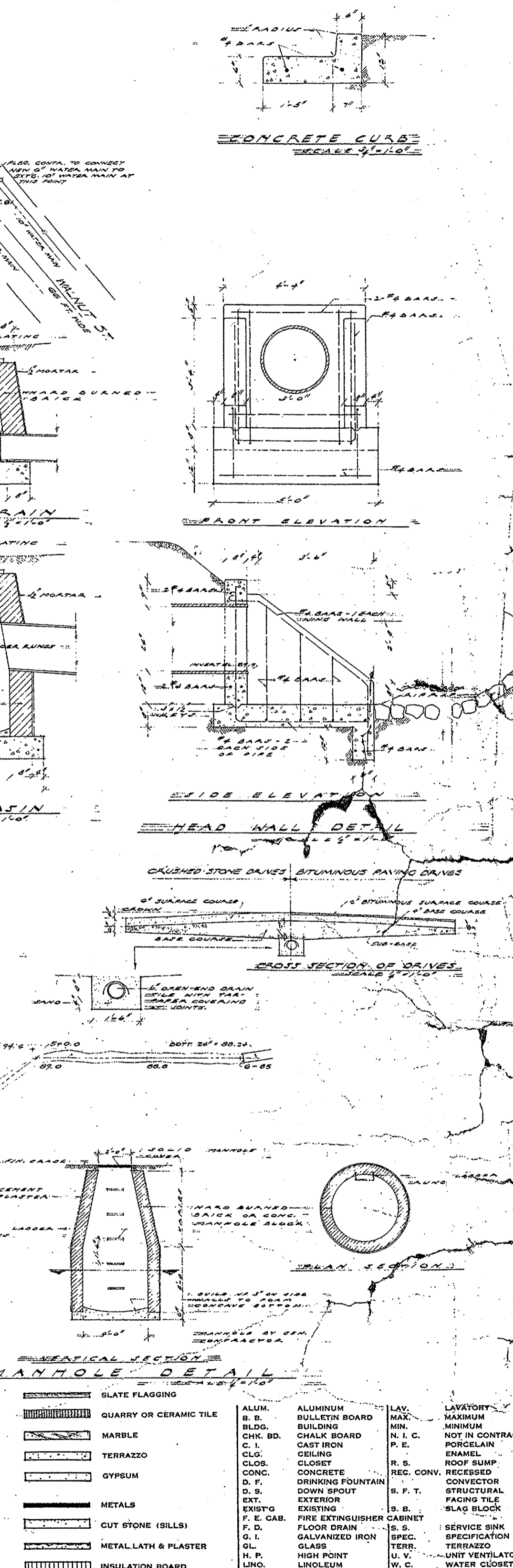
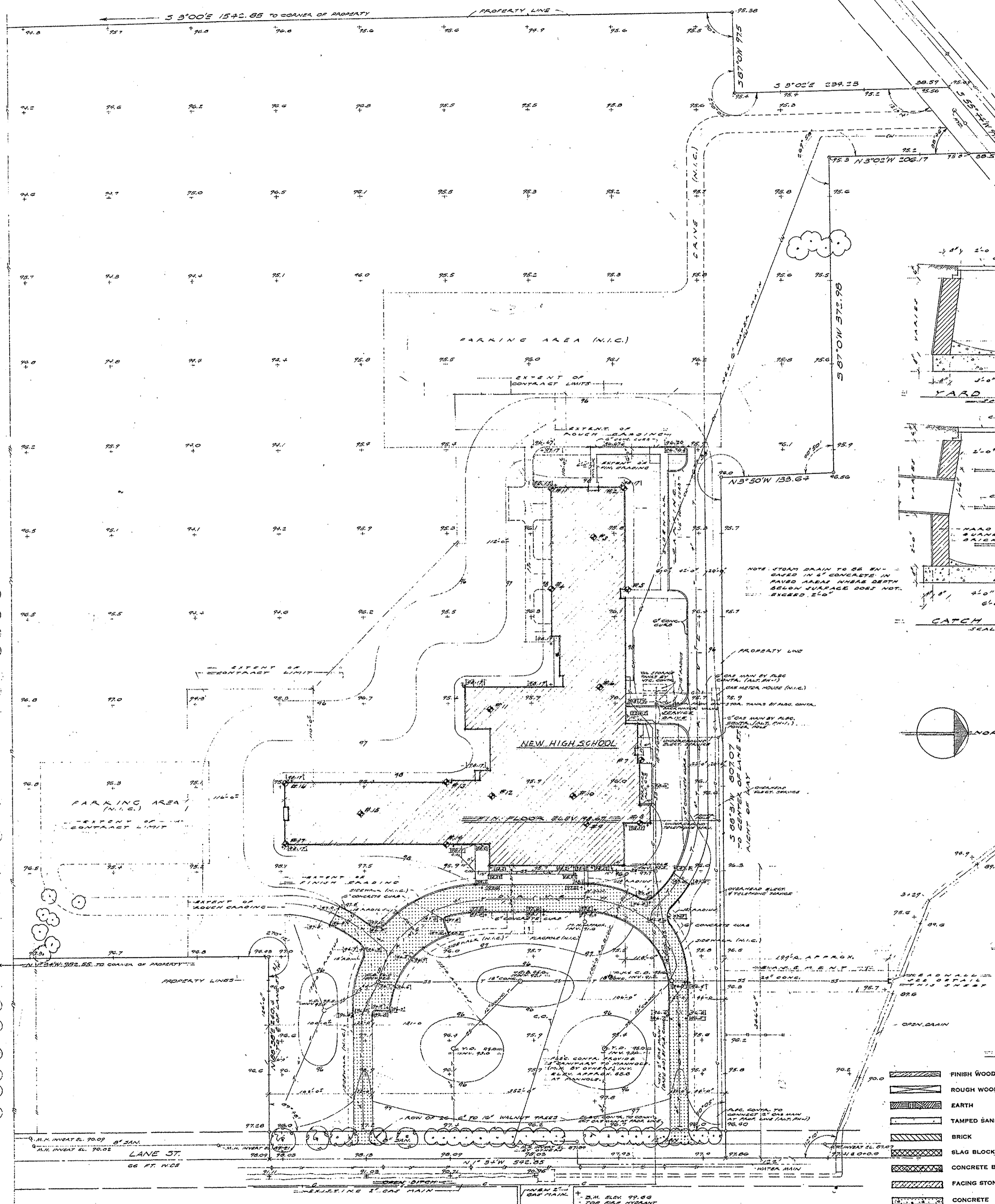
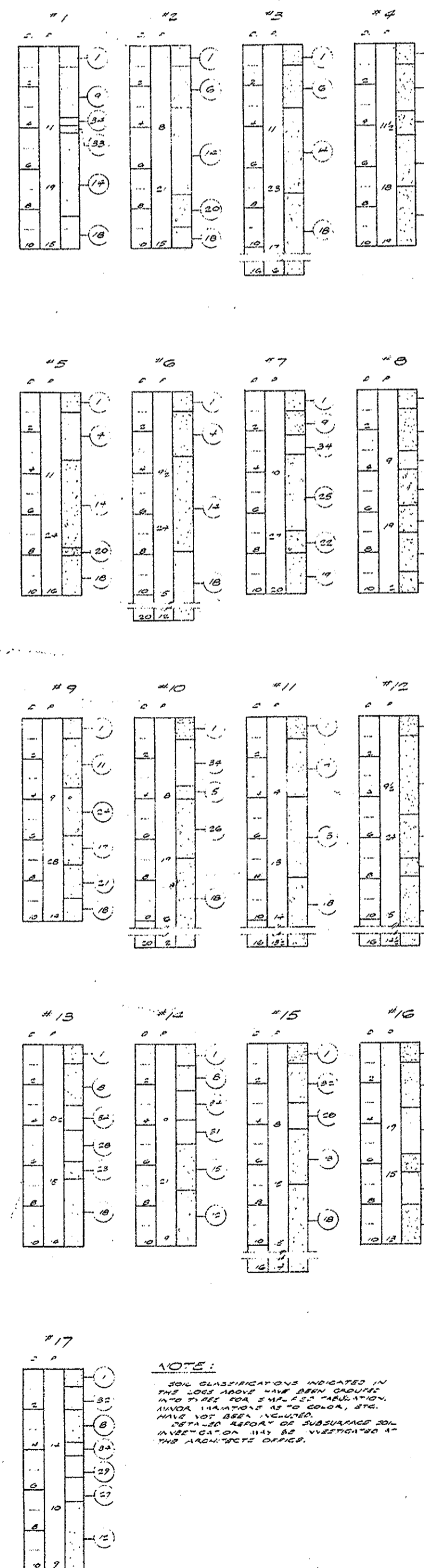
DR. <u>WARREN HOLMES</u>	<u>A NEW HIGH SCHOOL</u>	DATE: <u>MAR. 22, 1957</u>
TR. <u>R. C.</u>	<u>BLISSFIELD COMMUNITY SCHOOL DISTRICT</u>	SHEET NO. <u>1</u>
CHK. <u>H. D.</u>	<u>BLISSFIELD, MICHIGAN</u>	SERIES AND NO. <u>570</u>
APP'D. <u>WARREN HOLMES COMPANY</u>	<u>ARCHITECTS-ENGINEERS</u>	LANSING, MICHIGAN

LOG OF SOIL BORINGS

SOIL TEST DATA WAS BASED ON SOIL INVESTIGATION MADE AT THE SITE OF THE PROPOSED NEW HIGH SCHOOL, 300' W. OF LANE ST., LANSING, MICHIGAN, DATED OCTOBER 30, 1938. THE RESULTS OF THIS INVESTIGATION ARE GIVEN ON SHEETS 1, 2, 3, 4, 5, 6, 7, 8, 9, 10, 11, 12, 13, 14, 15, 16, 17, 18, 19, 20, 21, 22, 23, 24, 25, 26, 27, 28, 29, 30, 31, 32, 33, 34, 35, 36, 37, 38, 39, 40, 41, 42, 43, 44, 45, 46, 47, 48, 49, 50, 51, 52, 53, 54, 55, 56, 57, 58, 59, 60, 61, 62, 63, 64, 65, 66, 67, 68, 69, 70, 71, 72, 73, 74, 75, 76, 77, 78, 79, 80, 81, 82, 83, 84, 85, 86, 87, 88, 89, 90, 91, 92, 93, 94, 95, 96, 97, 98, 99, 100.

SOIL DESCRIPTIONS

1. LOCAL MUDS, SANDY FOR SOIL
2. 1/2" TO 1" HONEY COMB CLAY, SANDY MARLAGE
3. 1/2" TO 1" HONEY COMB CLAY, SANDY MARLAGE
4. 1/2" TO 1" HONEY COMB CLAY, SANDY MARLAGE
5. 1/2" TO 1" HONEY COMB CLAY, SANDY MARLAGE
6. 1/2" TO 1" HONEY COMB CLAY, SANDY MARLAGE
7. 1/2" TO 1" HONEY COMB CLAY, SANDY MARLAGE
8. 1/2" TO 1" HONEY COMB CLAY, SANDY MARLAGE
9. 1/2" TO 1" HONEY COMB CLAY, SANDY MARLAGE
10. 1/2" TO 1" HONEY COMB CLAY, SANDY MARLAGE
11. 1/2" TO 1" HONEY COMB CLAY, SANDY MARLAGE
12. 1/2" TO 1" HONEY COMB CLAY, SANDY MARLAGE
13. 1/2" TO 1" HONEY COMB CLAY, SANDY MARLAGE
14. 1/2" TO 1" HONEY COMB CLAY, SANDY MARLAGE
15. 1/2" TO 1" HONEY COMB CLAY, SANDY MARLAGE
16. 1/2" TO 1" HONEY COMB CLAY, SANDY MARLAGE
17. 1/2" TO 1" HONEY COMB CLAY, SANDY MARLAGE
18. 1/2" TO 1" HONEY COMB CLAY, SANDY MARLAGE
19. 1/2" TO 1" HONEY COMB CLAY, SANDY MARLAGE
20. 1/2" TO 1" HONEY COMB CLAY, SANDY MARLAGE
21. 1/2" TO 1" HONEY COMB CLAY, SANDY MARLAGE
22. 1/2" TO 1" HONEY COMB CLAY, SANDY MARLAGE
23. 1/2" TO 1" HONEY COMB CLAY, SANDY MARLAGE
24. 1/2" TO 1" HONEY COMB CLAY, SANDY MARLAGE
25. 1/2" TO 1" HONEY COMB CLAY, SANDY MARLAGE
26. 1/2" TO 1" HONEY COMB CLAY, SANDY MARLAGE
27. 1/2" TO 1" HONEY COMB CLAY, SANDY MARLAGE
28. 1/2" TO 1" HONEY COMB CLAY, SANDY MARLAGE
29. 1/2" TO 1" HONEY COMB CLAY, SANDY MARLAGE
30. 1/2" TO 1" HONEY COMB CLAY, SANDY MARLAGE
31. 1/2" TO 1" HONEY COMB CLAY, SANDY MARLAGE
32. 1/2" TO 1" HONEY COMB CLAY, SANDY MARLAGE
33. 1/2" TO 1" HONEY COMB CLAY, SANDY MARLAGE
34. 1/2" TO 1" HONEY COMB CLAY, SANDY MARLAGE
35. 1/2" TO 1" HONEY COMB CLAY, SANDY MARLAGE
36. 1/2" TO 1" HONEY COMB CLAY, SANDY MARLAGE
37. 1/2" TO 1" HONEY COMB CLAY, SANDY MARLAGE
38. 1/2" TO 1" HONEY COMB CLAY, SANDY MARLAGE
39. 1/2" TO 1" HONEY COMB CLAY, SANDY MARLAGE
40. 1/2" TO 1" HONEY COMB CLAY, SANDY MARLAGE
41. 1/2" TO 1" HONEY COMB CLAY, SANDY MARLAGE
42. 1/2" TO 1" HONEY COMB CLAY, SANDY MARLAGE
43. 1/2" TO 1" HONEY COMB CLAY, SANDY MARLAGE
44. 1/2" TO 1" HONEY COMB CLAY, SANDY MARLAGE
45. 1/2" TO 1" HONEY COMB CLAY, SANDY MARLAGE
46. 1/2" TO 1" HONEY COMB CLAY, SANDY MARLAGE
47. 1/2" TO 1" HONEY COMB CLAY, SANDY MARLAGE
48. 1/2" TO 1" HONEY COMB CLAY, SANDY MARLAGE
49. 1/2" TO 1" HONEY COMB CLAY, SANDY MARLAGE
50. 1/2" TO 1" HONEY COMB CLAY, SANDY MARLAGE
51. 1/2" TO 1" HONEY COMB CLAY, SANDY MARLAGE
52. 1/2" TO 1" HONEY COMB CLAY, SANDY MARLAGE
53. 1/2" TO 1" HONEY COMB CLAY, SANDY MARLAGE
54. 1/2" TO 1" HONEY COMB CLAY, SANDY MARLAGE
55. 1/2" TO 1" HONEY COMB CLAY, SANDY MARLAGE
56. 1/2" TO 1" HONEY COMB CLAY, SANDY MARLAGE
57. 1/2" TO 1" HONEY COMB CLAY, SANDY MARLAGE
58. 1/2" TO 1" HONEY COMB CLAY, SANDY MARLAGE
59. 1/2" TO 1" HONEY COMB CLAY, SANDY MARLAGE
60. 1/2" TO 1" HONEY COMB CLAY, SANDY MARLAGE
61. 1/2" TO 1" HONEY COMB CLAY, SANDY MARLAGE
62. 1/2" TO 1" HONEY COMB CLAY, SANDY MARLAGE
63. 1/2" TO 1" HONEY COMB CLAY, SANDY MARLAGE
64. 1/2" TO 1" HONEY COMB CLAY, SANDY MARLAGE
65. 1/2" TO 1" HONEY COMB CLAY, SANDY MARLAGE
66. 1/2" TO 1" HONEY COMB CLAY, SANDY MARLAGE
67. 1/2" TO 1" HONEY COMB CLAY, SANDY MARLAGE
68. 1/2" TO 1" HONEY COMB CLAY, SANDY MARLAGE
69. 1/2" TO 1" HONEY COMB CLAY, SANDY MARLAGE
70. 1/2" TO 1" HONEY COMB CLAY, SANDY MARLAGE
71. 1/2" TO 1" HONEY COMB CLAY, SANDY MARLAGE
72. 1/2" TO 1" HONEY COMB CLAY, SANDY MARLAGE
73. 1/2" TO 1" HONEY COMB CLAY, SANDY MARLAGE
74. 1/2" TO 1" HONEY COMB CLAY, SANDY MARLAGE
75. 1/2" TO 1" HONEY COMB CLAY, SANDY MARLAGE
76. 1/2" TO 1" HONEY COMB CLAY, SANDY MARLAGE
77. 1/2" TO 1" HONEY COMB CLAY, SANDY MARLAGE
78. 1/2" TO 1" HONEY COMB CLAY, SANDY MARLAGE
79. 1/2" TO 1" HONEY COMB CLAY, SANDY MARLAGE
80. 1/2" TO 1" HONEY COMB CLAY, SANDY MARLAGE
81. 1/2" TO 1" HONEY COMB CLAY, SANDY MARLAGE
82. 1/2" TO 1" HONEY COMB CLAY, SANDY MARLAGE
83. 1/2" TO 1" HONEY COMB CLAY, SANDY MARLAGE
84. 1/2" TO 1" HONEY COMB CLAY, SANDY MARLAGE
85. 1/2" TO 1" HONEY COMB CLAY, SANDY MARLAGE
86. 1/2" TO 1" HONEY COMB CLAY, SANDY MARLAGE
87. 1/2" TO 1" HONEY COMB CLAY, SANDY MARLAGE
88. 1/2" TO 1" HONEY COMB CLAY, SANDY MARLAGE
89. 1/2" TO 1" HONEY COMB CLAY, SANDY MARLAGE
90. 1/2" TO 1" HONEY COMB CLAY, SANDY MARLAGE
91. 1/2" TO 1" HONEY COMB CLAY, SANDY MARLAGE
92. 1/2" TO 1" HONEY COMB CLAY, SANDY MARLAGE
93. 1/2" TO 1" HONEY COMB CLAY, SANDY MARLAGE
94. 1/2" TO 1" HONEY COMB CLAY, SANDY MARLAGE
95. 1/2" TO 1" HONEY COMB CLAY, SANDY MARLAGE
96. 1/2" TO 1" HONEY COMB CLAY, SANDY MARLAGE
97. 1/2" TO 1" HONEY COMB CLAY, SANDY MARLAGE
98. 1/2" TO 1" HONEY COMB CLAY, SANDY MARLAGE
99. 1/2" TO 1" HONEY COMB CLAY, SANDY MARLAGE
100. 1/2" TO 1" HONEY COMB CLAY, SANDY MARLAGE



MATERIAL INDICATIONS AND ABBREVIATIONS	
FINISH WOOD	SLATE FLAGGING
ROUGH WOOD	QUARRY OR CERAMIC TILE
EARTH	MARBLE
TAMPED SAND	TERRAZZO
BRICK	GYPSUM
SLAG BLOCK	METALS
CONCRETE BLOCK	CUT STONE (GILLS)
FACING STONE	METALLATH & PLASTER
CONCRETE	INSULATION BOARD
STRUCT. FACING TILE	ACOUSTIC FIBER TILE
ALUM.	ALUMINUM
B. S.	BUILDING BOARD
BLDG.	BUILDING
CHK. BD.	CHALK BOARD
C.	CAST IRON
CLG.	CEILING
CLOS.	CLOSET
CONC.	CONCRETE
D. F.	DRINKING FOUNTAIN
D. S.	DOWN SPOUT
EXT.	EXTERIOR
EXIST'G	EXISTING
F. E. CAB.	FIRE EXTINGUISHER CABINET
G. I.	GALVANIZED IRON
GL.	GLASS
H. P.	HIGH POINT
LINO.	LINOLEUM
L. P.	LOW POINT
LKR.	LOCKER
L. R.	LOCKER
LAV.	LAVATORY
MAX.	MAXIMUM
MIN.	MINIMUM
N. I. C.	NOT IN CONTRACT
P. C.	PORCELAIN
R. S.	ROOF SUMP
REC. CONV.	RECESSED CONVECTOR
S. F. T.	STRUCTURAL STEEL
S. F. T. B.	STRUCTURAL STEEL BLOCK
S. S.	SERVICE SINK
SPEC.	SPECIFICATION
TERR.	TERRAZZO
U. V.	UNIT VENTILATOR
W. C.	WATER CLOSET
W. F.	WIDE FLANGE

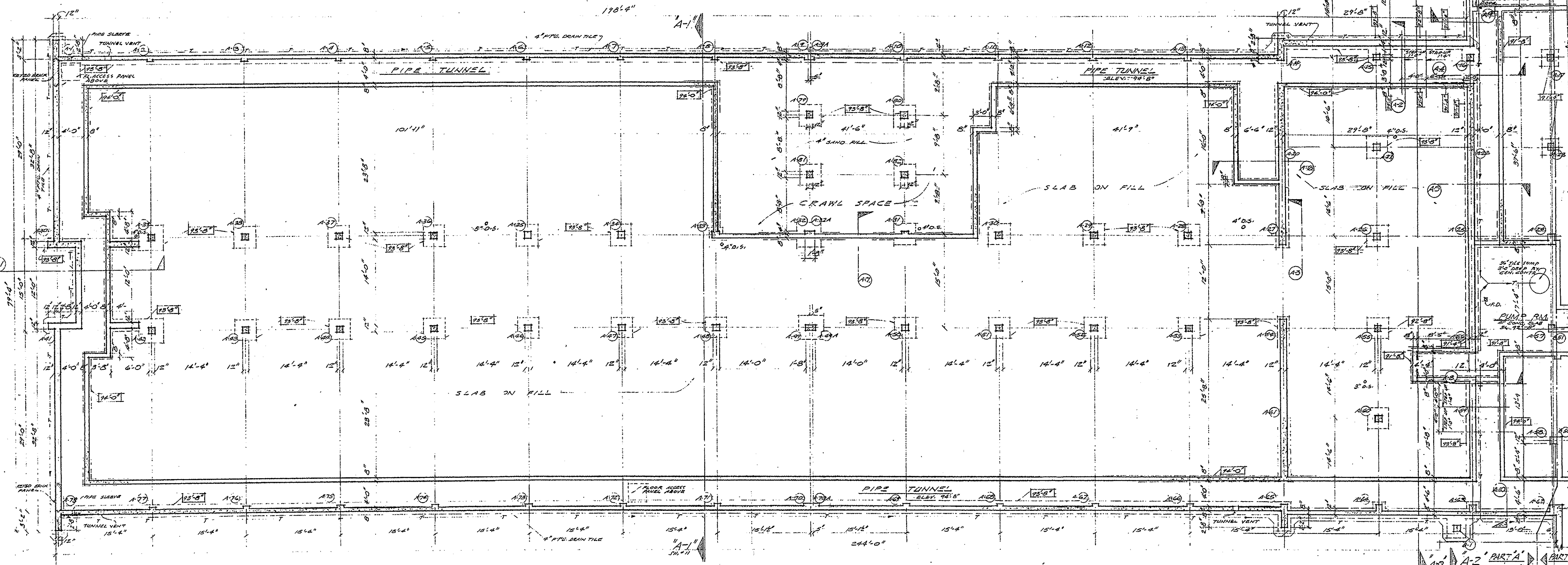
WARREN HOLMES COMPANY
ARCHITECTS-ENGINEERS
LANSING, MICHIGAN

NEW HIGH SCHOOL
SOUTHFIELD COMMUNITY SCHOOL DISTRICT
SOUTHFIELD, MICHIGAN

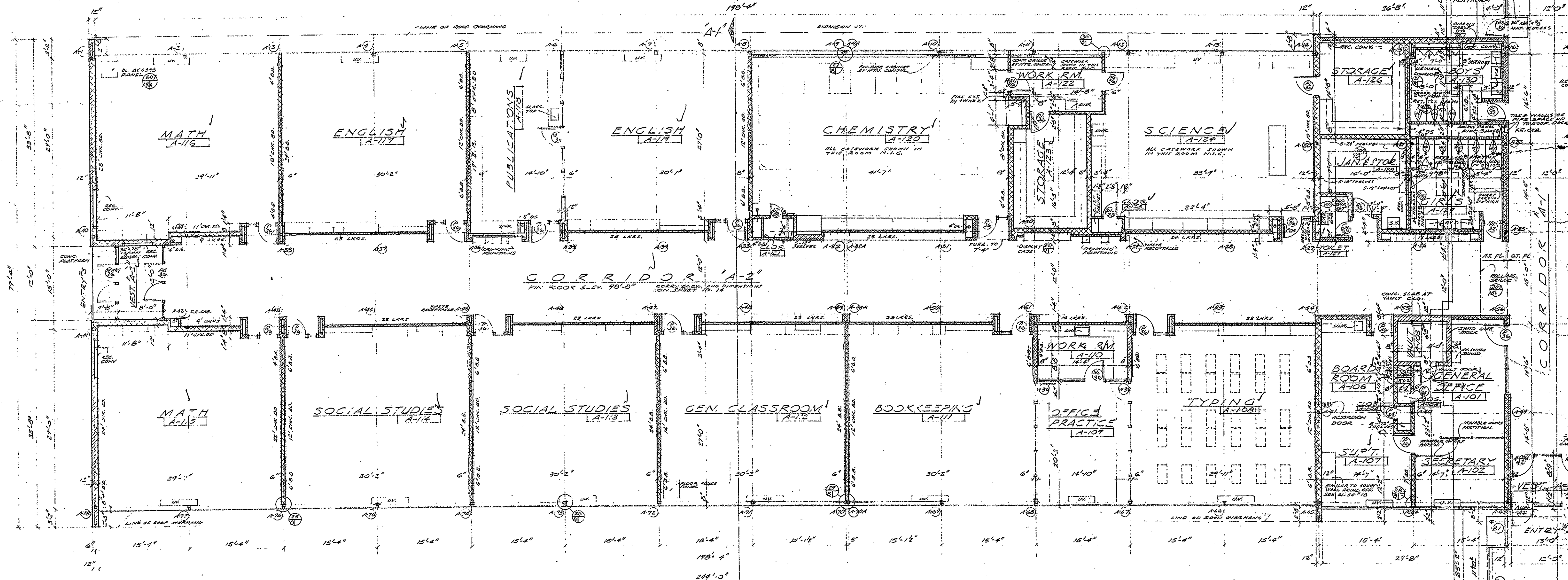
DATE: MAR. 27, 1937
SHEET NO. 2
SERIES NO. 5701

NOTES:

1. SOIL CLASSIFICATIONS INDICATED IN LOGS ARE BASED ON SOIL BORINGS MADE AT THE SITE OF THE PROPOSED NEW HIGH SCHOOL, 300' W. OF LANE ST., LANSING, MICHIGAN, DATED OCTOBER 30, 1938.
2. THE RESULTS OF THIS INVESTIGATION ARE GIVEN ON SHEETS 1, 2, 3, 4, 5, 6, 7, 8, 9, 10, 11, 12, 13, 14, 15, 16, 17, 18, 19, 20, 21, 22, 23, 24, 25, 26, 27, 28, 29, 30, 31, 32, 33, 34, 35, 36, 37, 38, 39, 40, 41, 42, 43, 44, 45, 46, 47, 48, 49, 50, 51, 52, 53, 54, 55, 56, 57, 58, 59, 60, 61, 62, 63, 64, 65, 66, 67, 68, 69, 70, 71, 72, 73, 74, 75, 76, 77, 78, 79, 80, 81, 82, 83, 84, 85, 86, 87, 88, 89, 90, 91, 92, 93, 94, 95, 96, 97, 98, 99, 100.
3. THE RESULTS OF THIS INVESTIGATION ARE GIVEN ON SHEETS 1, 2, 3, 4, 5, 6, 7, 8, 9, 10, 11, 12, 13, 14, 15, 16, 17, 18, 19, 20, 21, 22, 23, 24, 25, 26, 27, 28, 29, 30, 31, 32, 33, 34, 35, 36, 37, 38, 39, 40, 41, 42, 43, 44, 45, 46, 47, 48, 49, 50, 51, 52, 53, 54, 55, 56, 57, 58, 59, 60, 61, 62, 63, 64, 65, 66, 67, 68, 69, 70, 71, 72, 73, 74, 75, 76, 77, 78, 79, 80, 81, 82, 83, 84, 85, 86, 87, 88, 89, 90, 91, 92, 93, 94, 95, 96, 97, 98, 99, 100.
4. THE RESULTS OF THIS INVESTIGATION ARE GIVEN ON SHEETS 1, 2, 3, 4, 5, 6, 7, 8, 9, 10, 11, 12, 13, 14, 15, 16, 17, 18, 19, 20, 21, 22, 23, 24, 25, 26, 27, 28, 29, 30, 31, 32, 33, 34, 35, 36, 37, 38, 39, 40, 41, 42, 43, 44, 45, 46, 47, 48, 49, 50, 51, 52, 53, 54, 55, 56, 57, 58, 59, 60, 61, 62, 63, 64, 65, 66, 67, 68, 69, 70, 71, 72, 73, 74, 75, 76, 77, 78, 79, 80, 81, 82, 83, 84, 85, 86, 87, 88, 89, 90, 91, 92, 93, 94, 95, 96, 97, 98, 99, 100.
5. THE RESULTS OF THIS INVESTIGATION ARE GIVEN ON SHEETS 1, 2, 3, 4, 5, 6, 7, 8, 9, 10, 11, 12, 13, 14, 15, 16, 17, 18, 19, 20, 21, 22, 23, 24, 25, 26, 27, 28, 29, 30, 31, 32, 33, 34, 35, 36, 37, 38, 39, 40, 41, 42, 43, 44, 45, 46, 47, 48, 49, 50, 51, 52, 53, 54, 55, 56, 57, 58, 59, 60, 61, 62, 63, 64, 65, 66, 67, 68, 69, 70, 71, 72, 73, 74, 75, 76, 77, 78, 79, 80, 81, 82, 83, 84, 85, 86, 87, 88, 89, 90, 91, 92, 93, 94, 95, 96, 97, 98, 99, 100.



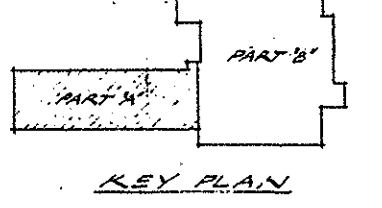
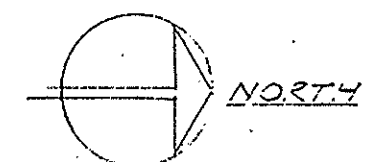
FOUNDATION PLAN - PART A
SCALE: 8" = 1'-0"
FOUNDATION NOTES - SH. 95



GENERAL PLAN NOTES

- 1 - GENERAL CONTRACTOR SHALL CHECK & VERIFY ALL DIMENSIONS ON THIS JOB & SHALL BE RESPONSIBLE FOR SAME.
- 2 - THIS SYMBOL INDICATES DIMENSIONS BY HEADING COMP. WHERE SHOWN AT WALLS, PROVIDE DIMENSIONS BY 4" SIZE AND LOCATION AS SHOWN BY HEADING COMP. WHERE AT CORNERS.
- 3 - ALL DIMENSIONS ARE MILLIMETER DIMENSIONS UNLESS OTHERWISE NOTED.
- 4 - ALL BLOCK WORK SHALL BE 8" BLOCK COURSE.
- 5 - TOP OF JOIST EXTENDING OVER TOP SHALL BE 5/8" ABOVE FINISH FLOOR LINE.
- 6 - FOLLOWING FOUND ON HORIZONTAL DIMENSIONS:
 - A - ROOM FINISH SCHEDULE ON SH. # 9
 - B - DOOR THRESH ON SH. # 10
 - C - DOOR JAMB DETAILS: INTERIOR ON SH. # 11
 - D - EXTERIOR ON SH. # 12
 - E - DOOR JAMB DETAILS: EXTERIOR ON SH. # 13
 - F - LOCKER INSTALLATION DETAILS ON SH. # 14
 - G - CROWN MOULD ON SH. # 15
 - H - MATERIALS INDICATIONS & ABBREVIATIONS ON SH. # 16
 - I - WINDOW & COLUMN DETAILS ON SH. # 17
 - J - CHAIR BOARD & BULLETIN BOARD DETAILS ON SH. # 18
 - K - PART 2 INTERIOR - BOYS ON HORIZONTAL DIMENSIONS
 - L - PART 2 INTERIOR - GIRLS ON HORIZONTAL DIMENSIONS
 - M - PART 2 INTERIOR - BOYS ON VERTICAL DIMENSIONS
 - N - PART 2 INTERIOR - GIRLS ON VERTICAL DIMENSIONS
- 7 - ELEV. & DETAILS OF CLOSETS ON SH. #

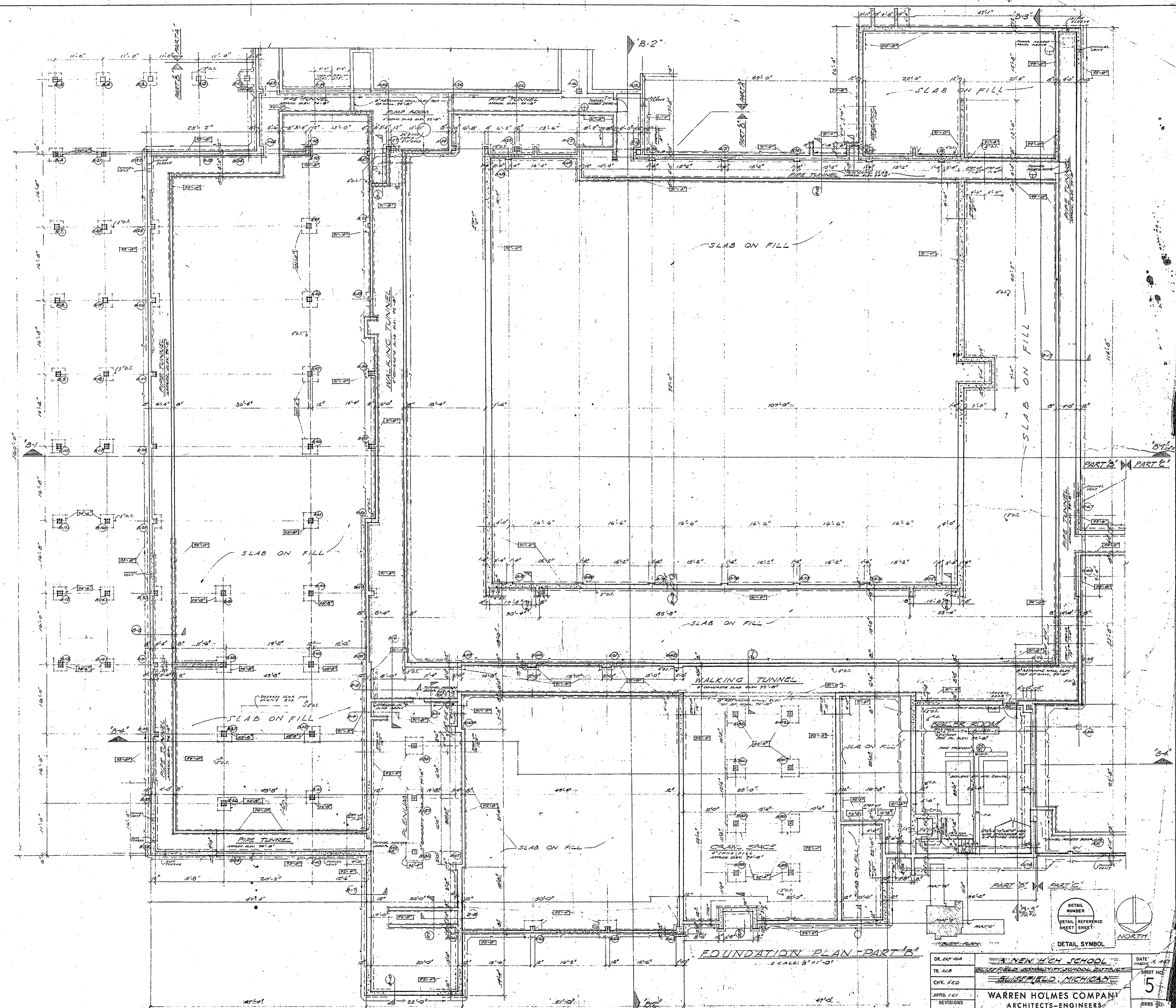
FLOOR PLAN - PART A
SCALE: 3/8" = 1'-0"



DETAIL NUMBER	DETAIL SYMBOL

DR. REC.	WARREN HOLMES COMPANY	DATE	MAR. 22, 1958
TR. REC.	BLISSFIELD COMMUNITY SCHOOL DISTRICT	SHEET NO.	4
CHK. H.M.B.	BLISSFIELD, MICHIGAN	REVISIONS	
APP'D. I.C.L.	WARREN HOLMES COMPANY	ARCHITECTS-ENGINEERS	
	LANSING, MICHIGAN		

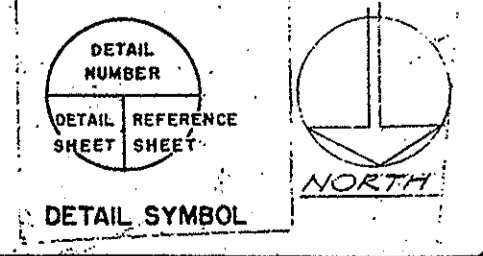
5701

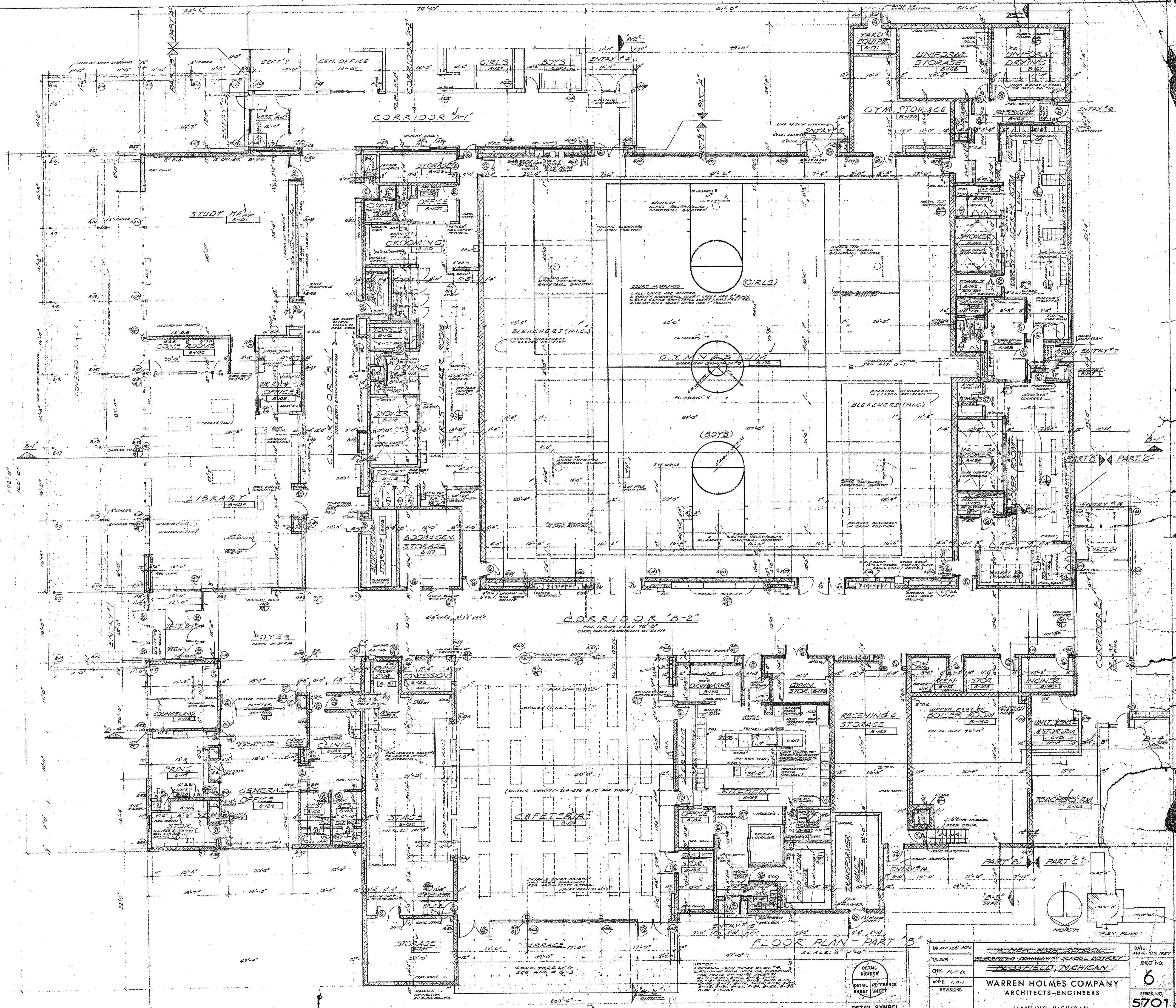


FOUNDATION PLAN - PART B

SCALE: 5/8" = 1'-0"

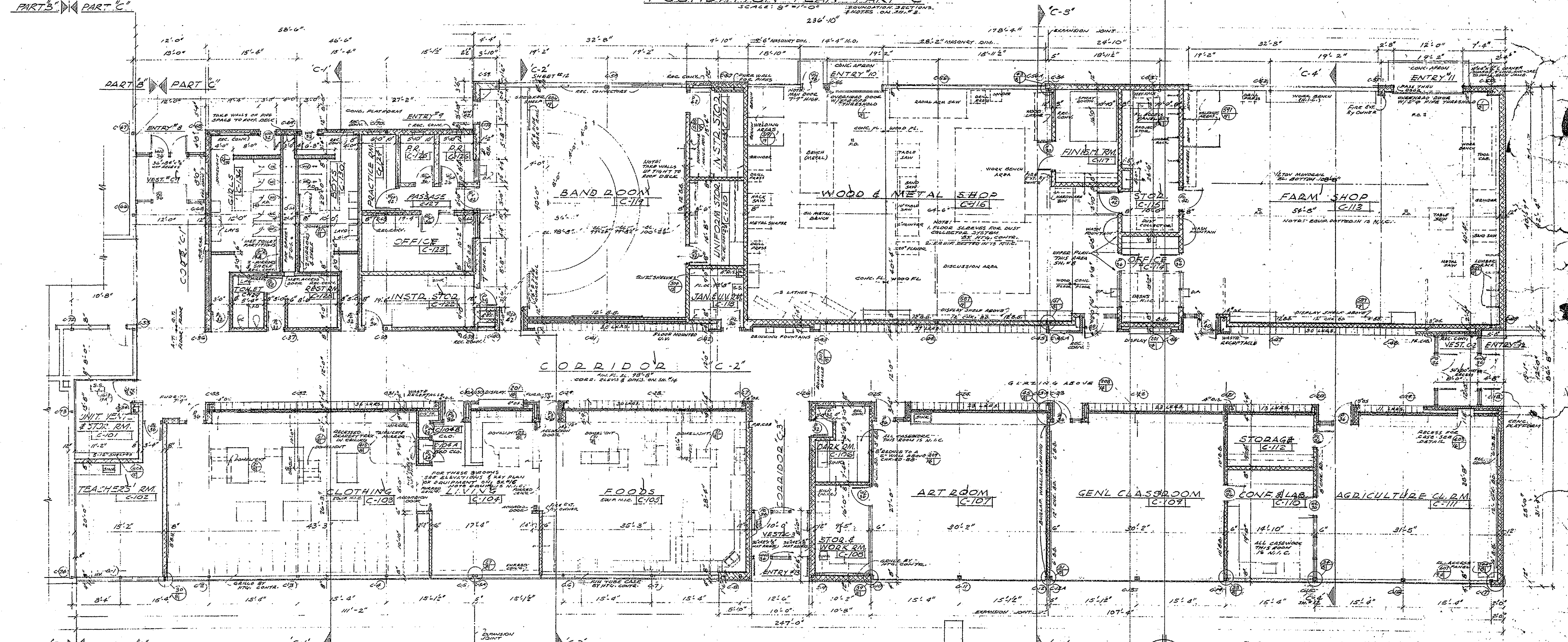
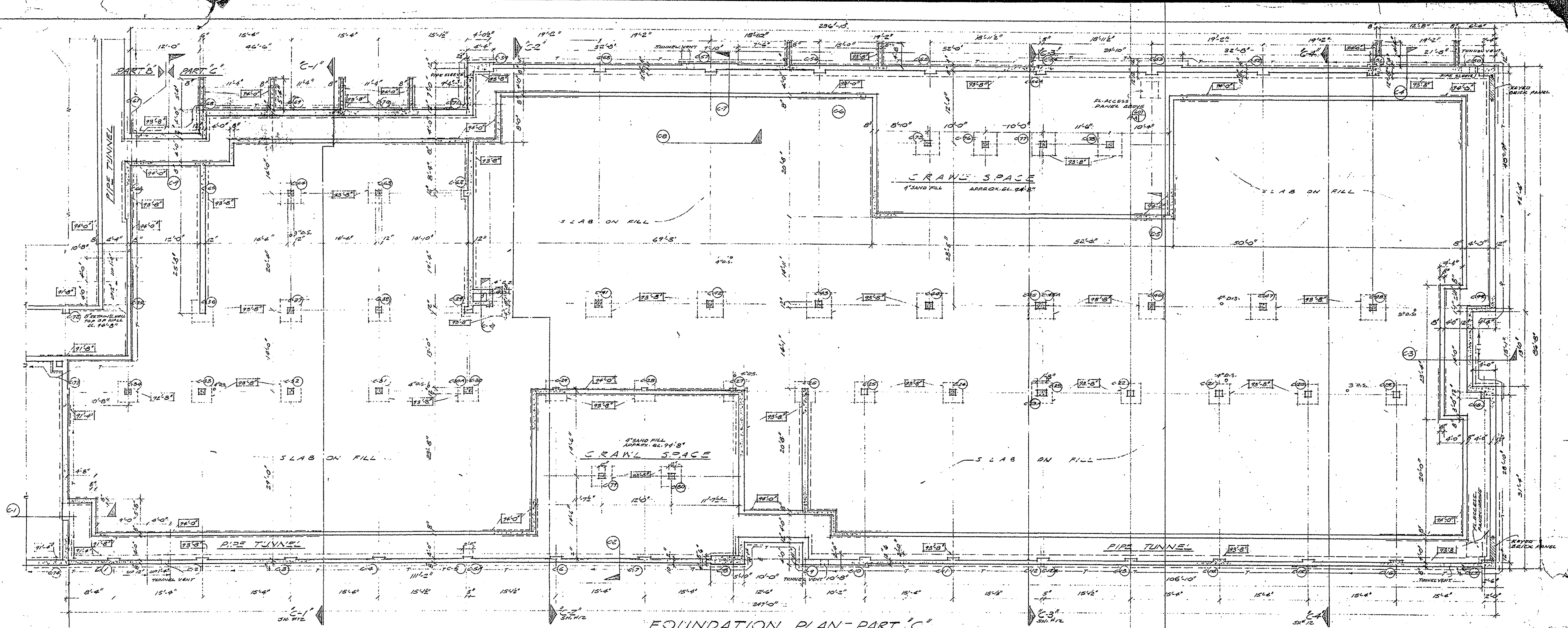
DR. EXP. REG.	A. NEW HIGH SCHOOL	DATE: MARCH 1, 1914
TR. REG.	BLUESFIELD, MICHIGAN	SHEET NO. 5
CHK. REG.	WARREN HOLMES COMPANY	SERIES NO. 5701
APRD. 1/11	ARCHITECTS-ENGINEERS	
REVISIONS	LANSING, MICHIGAN	





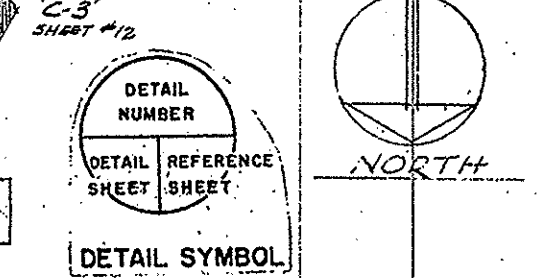
DETAIL SYMBOL
 DETAIL NUMBER
 DETAIL REFERENCE SHEET SHEET

DR. EXP. 10/1/54	WARREN HOLMES COMPANY	DATE: MAR. 25, 1957
TR. 416	ARCHITECTS-ENGINEERS	SHEET NO. 6
CHK. H.B.D.	LANSING, MICHIGAN	SERIES NO. 5701
APP'D. 1.0.1		
REVISIONS		

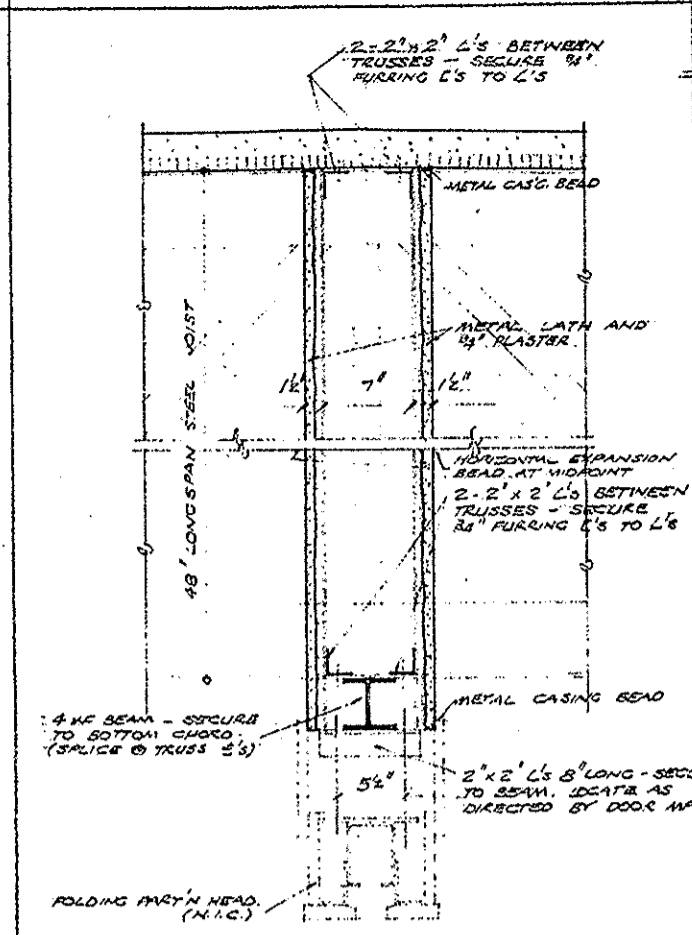


NOTE:
 1. GENERAL PLAN OVER 20' x 20'
 2. FOLLOWING ROOM TOTAL AREA ELEV.
 3. ALL ROOMS SHALL BE FINISHED TO
 4. FIN. FLOOR ELEV. AS SHOWN
 5. ALL ROOMS SHALL BE FINISHED TO
 6. FIN. FLOOR ELEV. AS SHOWN
 7. ALL ROOMS SHALL BE FINISHED TO
 8. FIN. FLOOR ELEV. AS SHOWN
 9. ALL ROOMS SHALL BE FINISHED TO
 10. FIN. FLOOR ELEV. AS SHOWN

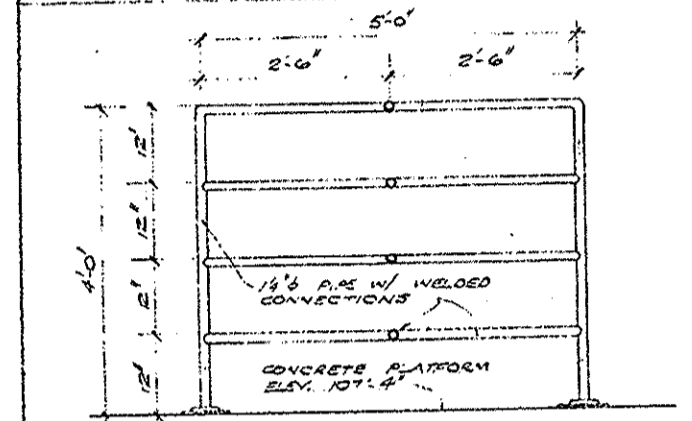
FLOOR PLAN - PART C
 SCALE: 1/8" = 1'-0"



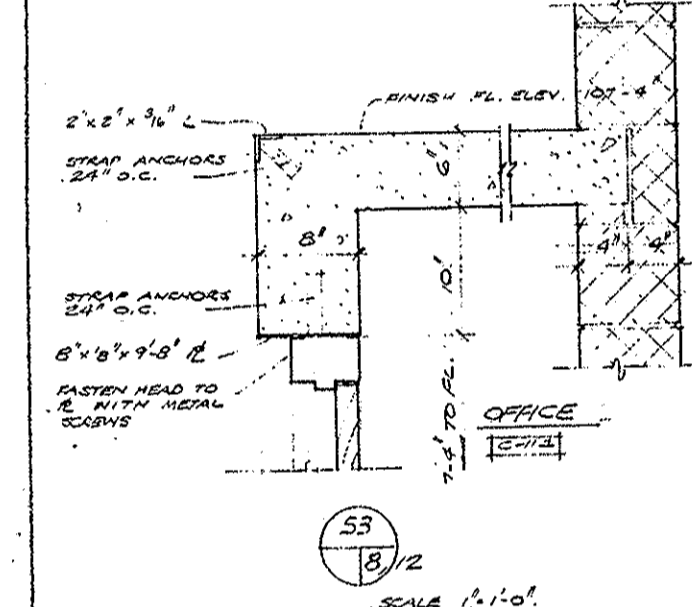
DR. NO. 10108	A NEW HIGH SCHOOL	DATE MAR 25, 1957
TR. NO. 10108	BLISSFIELD COMMUNITY SCHOOL DISTRICT	SHEET NO.
CHK. H.E.P.	BLISSFIELD, MICHIGAN	7
APPR. J.C.P.	WARREN HOLMES COMPANY	ARCHITECTS-ENGINEERS
REVISIONS	LANSING, MICHIGAN	5701



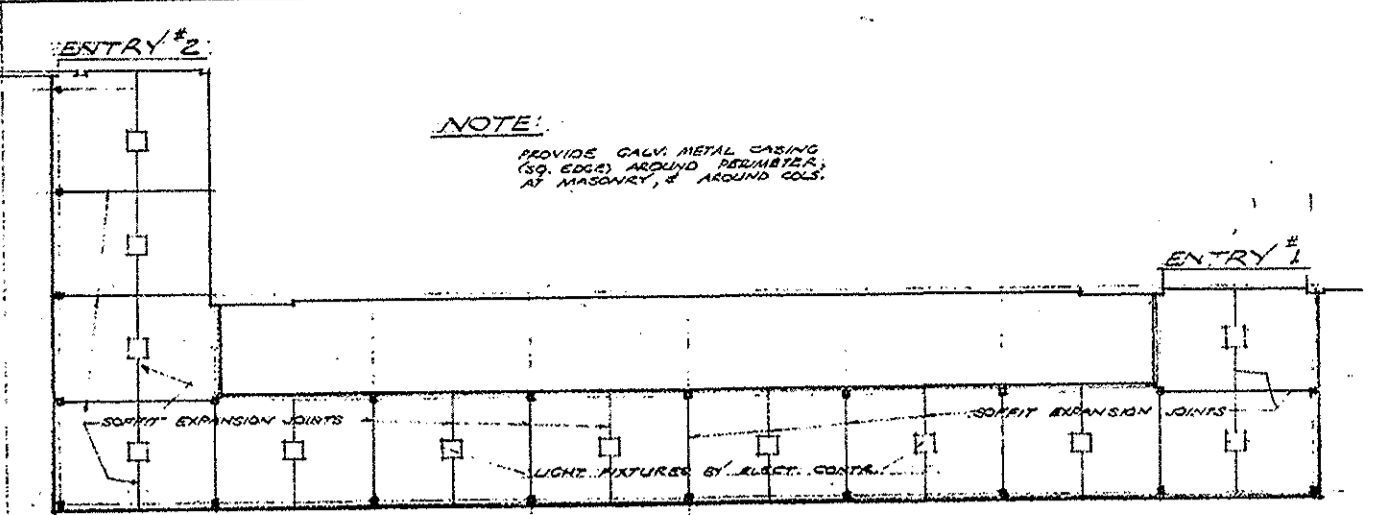
51 DETAIL OF HEAD OF FOLDING DOOR AT GYM. SCALE: 1/4" = 1'-0"



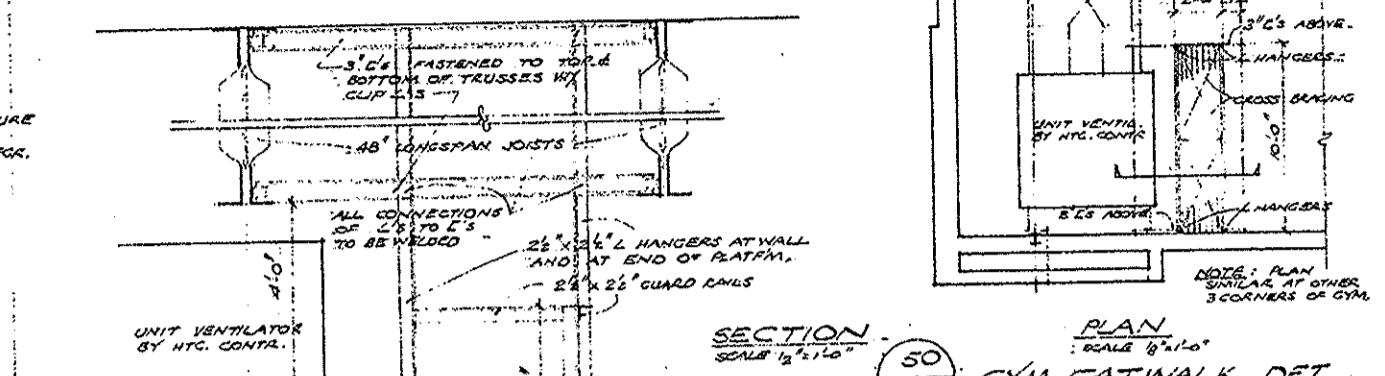
52 PLYWOOD STORAGE RACK. SCALE: 1/4" = 1'-0"



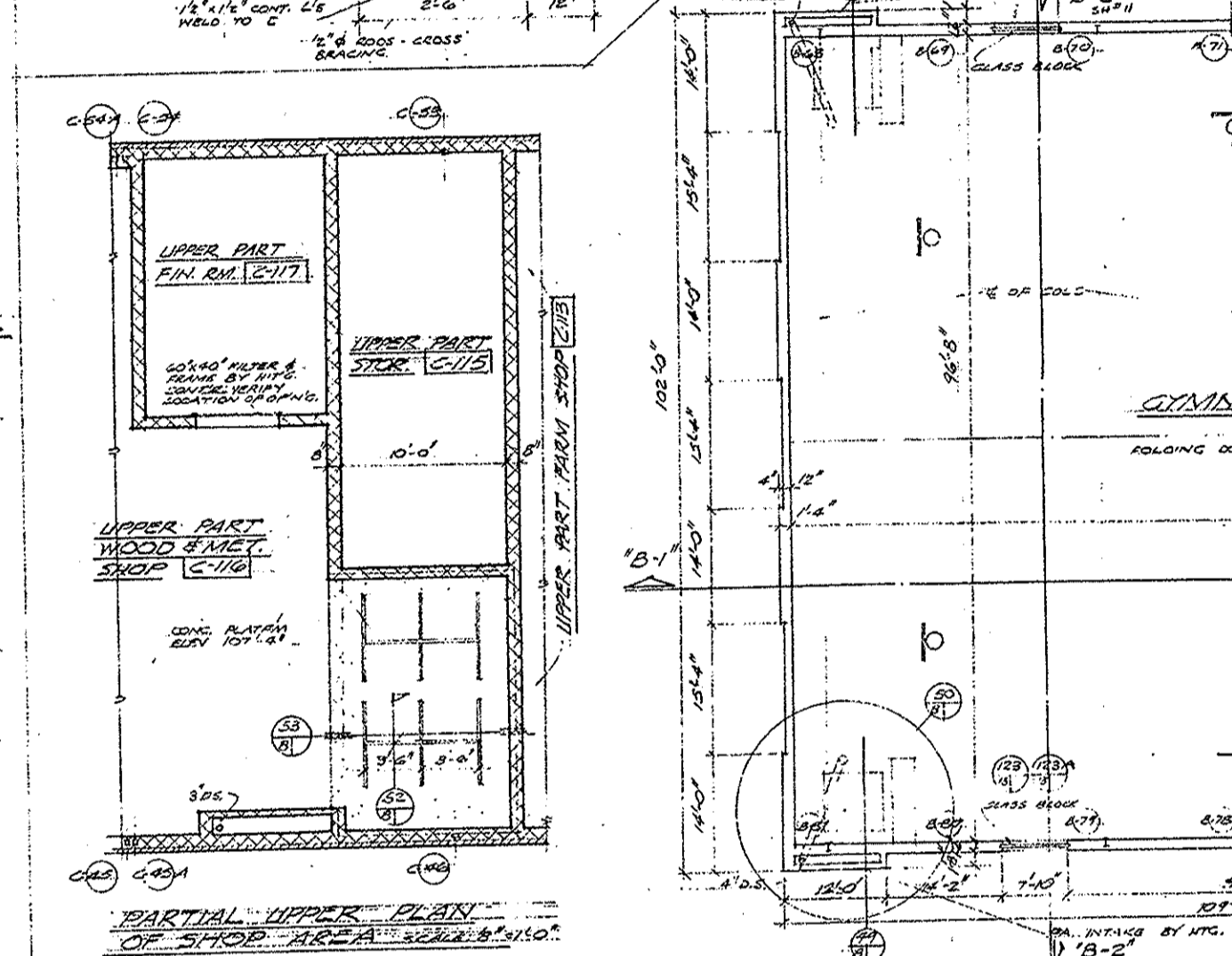
53 PARTIAL UPPER PLAN OF SHOE LOCKER. SCALE: 1/4" = 1'-0"



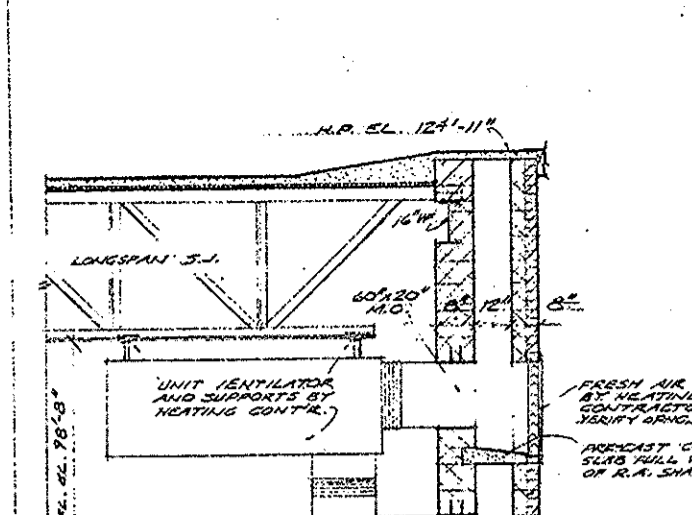
REFLECTED CEILING PLAN OF COVERED WALK. SCALE: 1/4" = 1'-0"



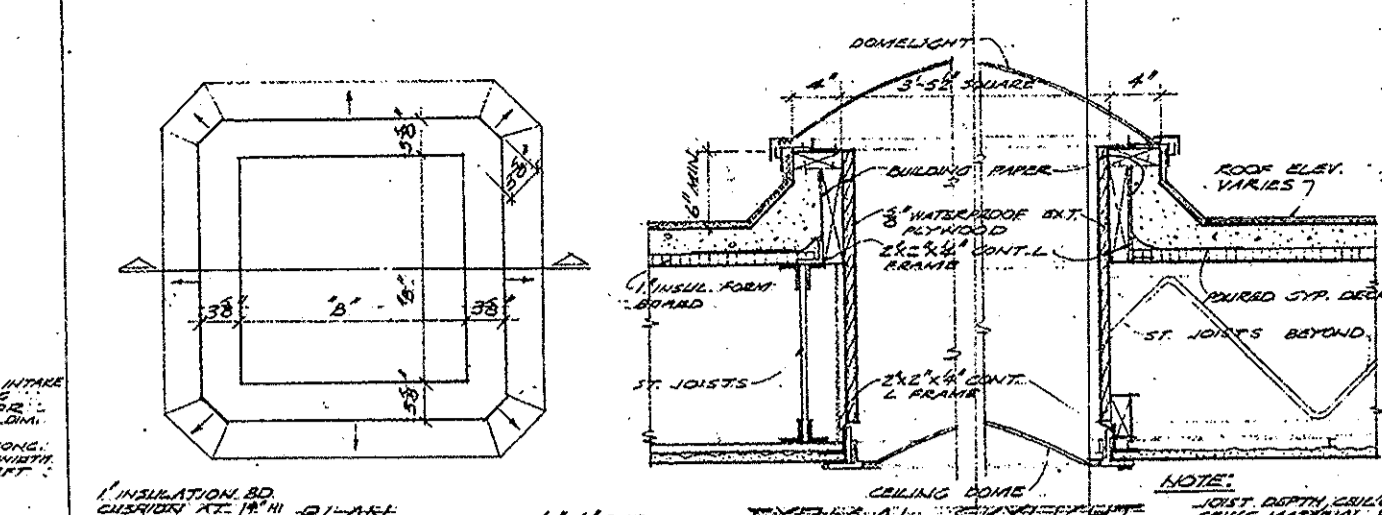
50 GYM CATWALK DET. SCALE: 1/4" = 1'-0"



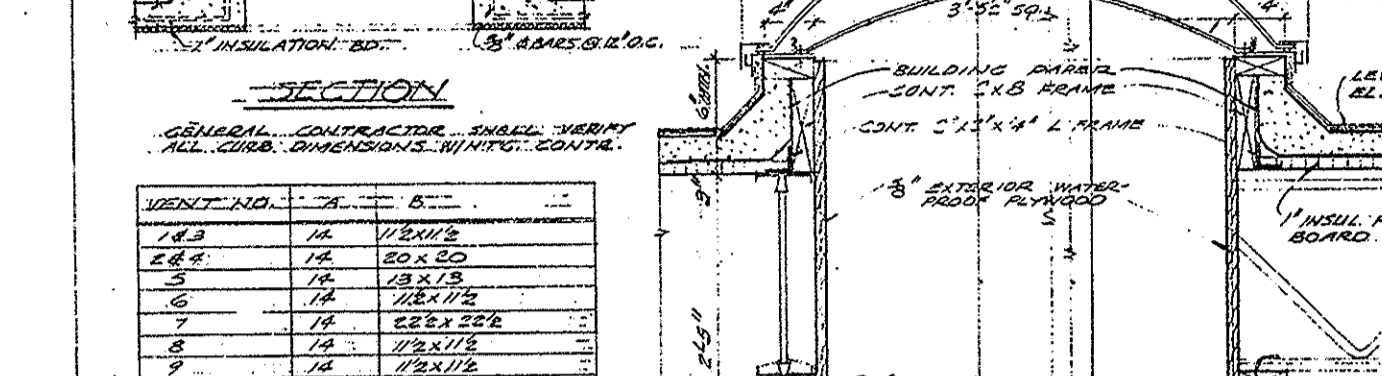
UPPER PLAN OF GYMNASIUM. SCALE: 1/4" = 1'-0"



FRESH AIR INTAKE DET. SCALE: 1/4" = 1'-0"



TYPICAL SKYLIGHT. SCALE: 1/4" = 1'-0"

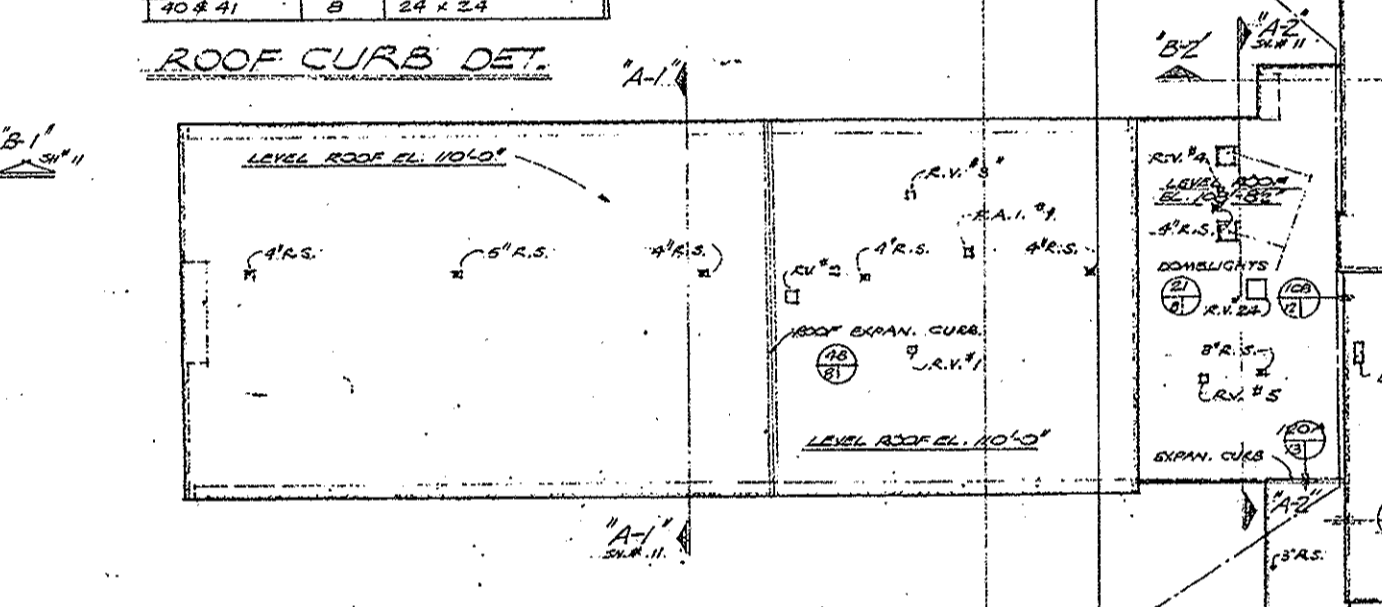


SKYLIGHT AT WINDOW. SCALE: 1/4" = 1'-0"

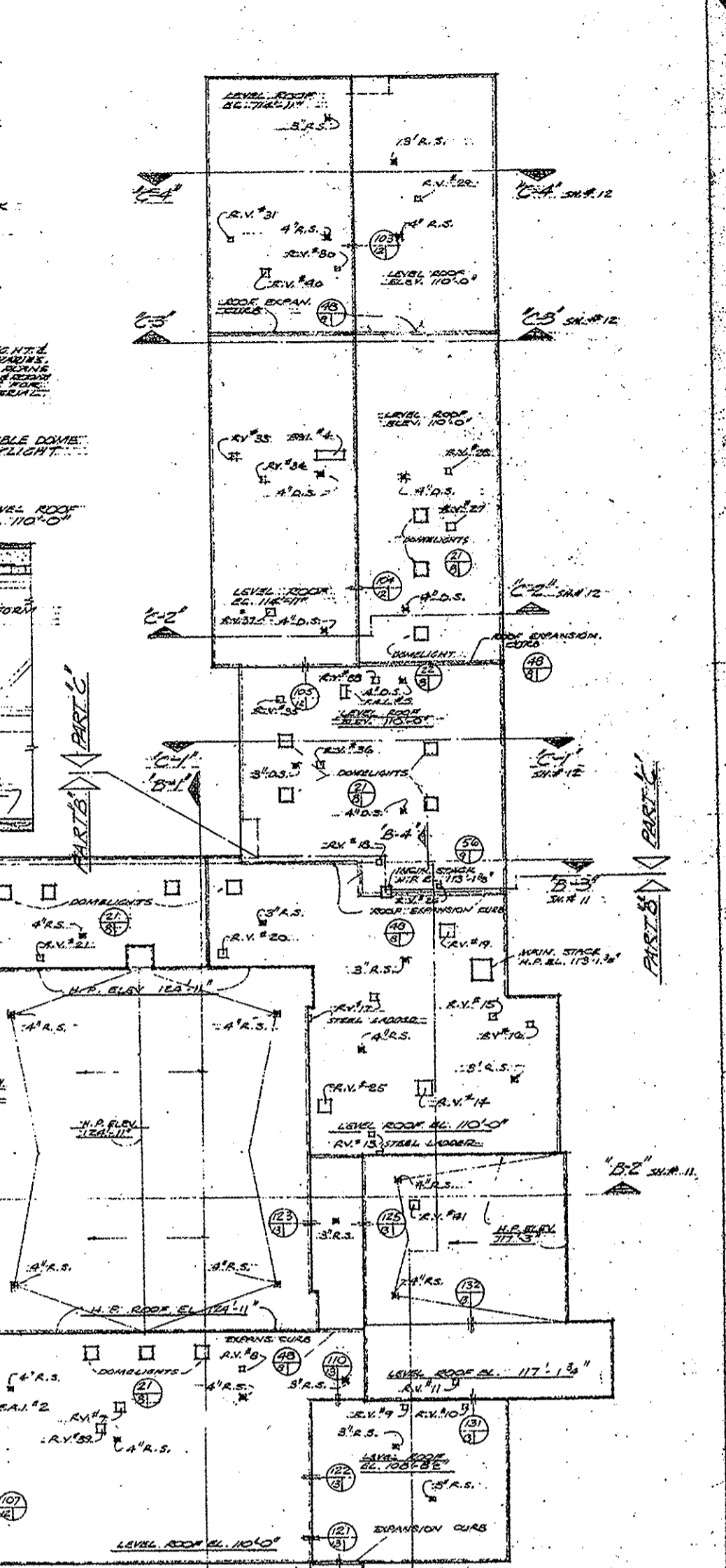
GENERAL CONTRACTOR SHALL VERIFY ALL DIMENSIONS WITH CONTRACTOR.

ITEM NO.	QTY.	UNIT	DESCRIPTION
1	1	EA	SKYLIGHT
2	1	EA	SKYLIGHT
3	1	EA	SKYLIGHT
4	1	EA	SKYLIGHT
5	1	EA	SKYLIGHT
6	1	EA	SKYLIGHT
7	1	EA	SKYLIGHT
8	1	EA	SKYLIGHT
9	1	EA	SKYLIGHT
10	1	EA	SKYLIGHT
11	1	EA	SKYLIGHT
12	1	EA	SKYLIGHT
13	1	EA	SKYLIGHT
14	1	EA	SKYLIGHT
15	1	EA	SKYLIGHT
16	1	EA	SKYLIGHT
17	1	EA	SKYLIGHT
18	1	EA	SKYLIGHT
19	1	EA	SKYLIGHT
20	1	EA	SKYLIGHT
21	1	EA	SKYLIGHT
22	1	EA	SKYLIGHT
23	1	EA	SKYLIGHT
24	1	EA	SKYLIGHT
25	1	EA	SKYLIGHT
26	1	EA	SKYLIGHT
27	1	EA	SKYLIGHT
28	1	EA	SKYLIGHT
29	1	EA	SKYLIGHT
30	1	EA	SKYLIGHT
31	1	EA	SKYLIGHT
32	1	EA	SKYLIGHT
33	1	EA	SKYLIGHT
34	1	EA	SKYLIGHT
35	1	EA	SKYLIGHT
36	1	EA	SKYLIGHT
37	1	EA	SKYLIGHT
38	1	EA	SKYLIGHT
39	1	EA	SKYLIGHT
40	1	EA	SKYLIGHT

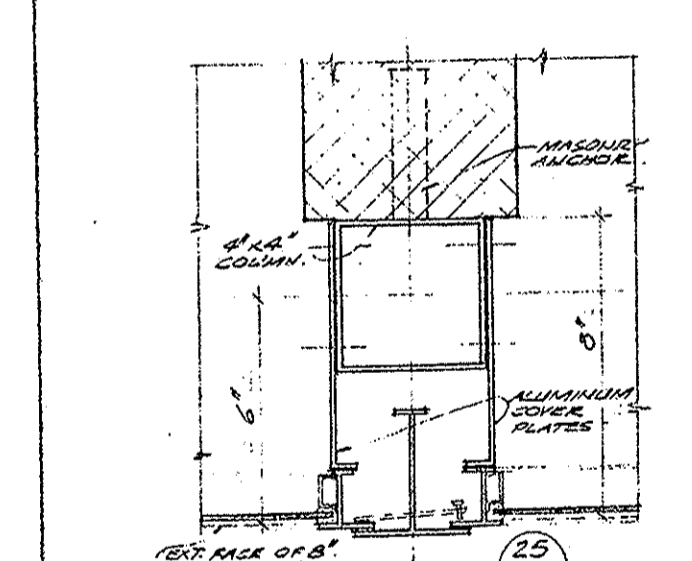
ROOF CURS DET. SCALE: 1/4" = 1'-0"



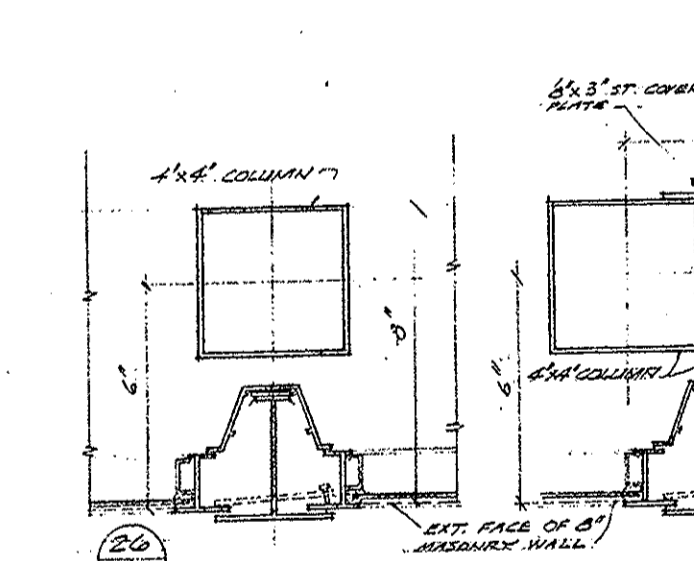
ROOF CURS DET. SCALE: 1/4" = 1'-0"



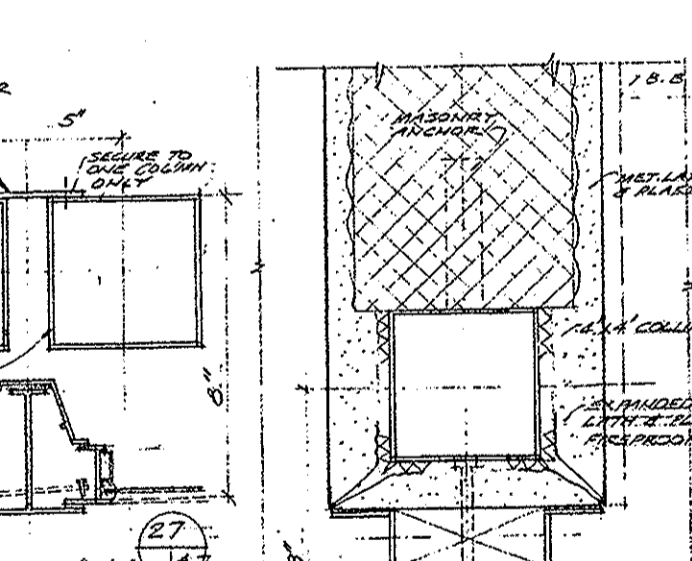
ROOF PLAN. SCALE: 1/4" = 1'-0"



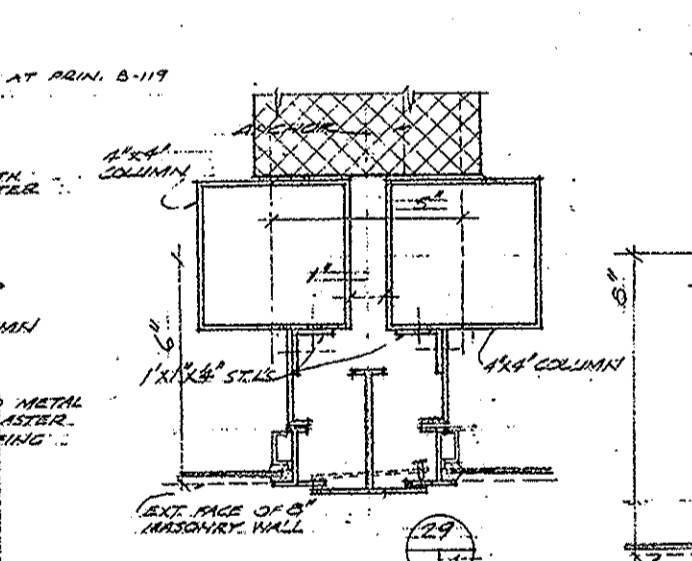
25 SCALE: 3/4" = 1'-0"



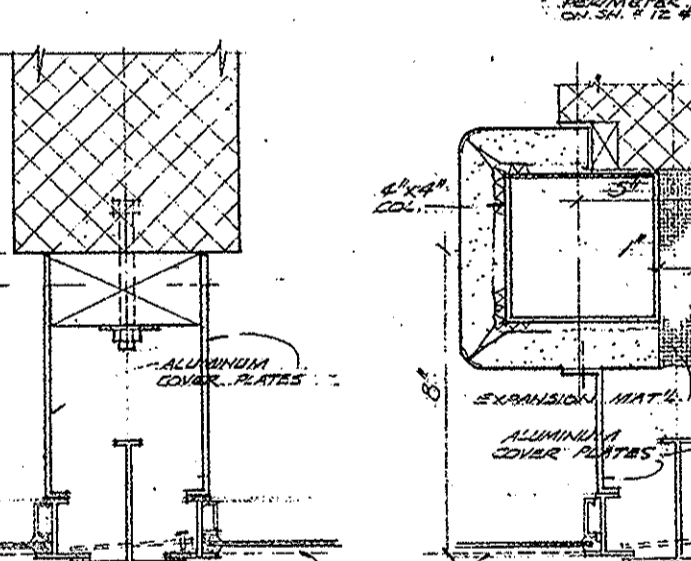
26 SCALE: 3/4" = 1'-0"



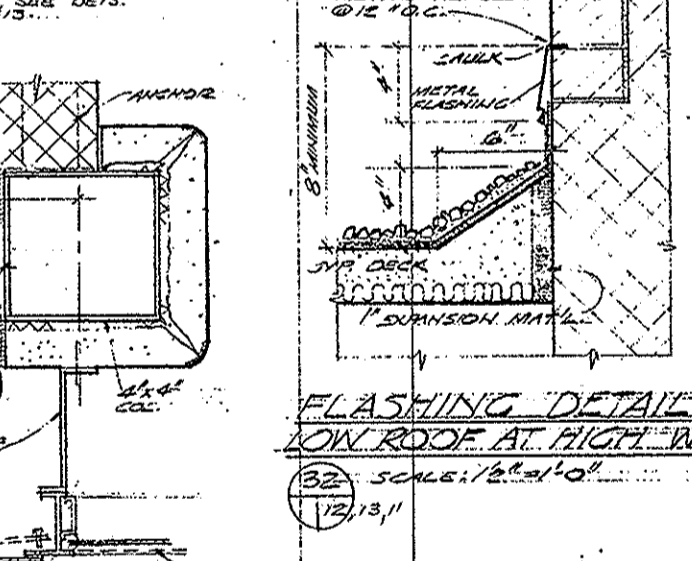
27 SCALE: 3/4" = 1'-0"



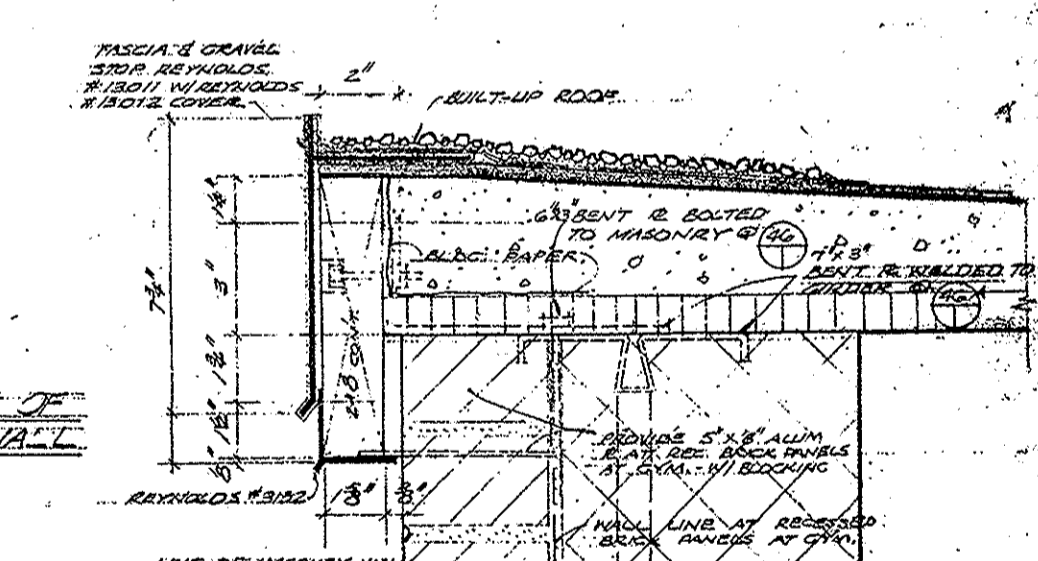
28 SCALE: 3/4" = 1'-0"



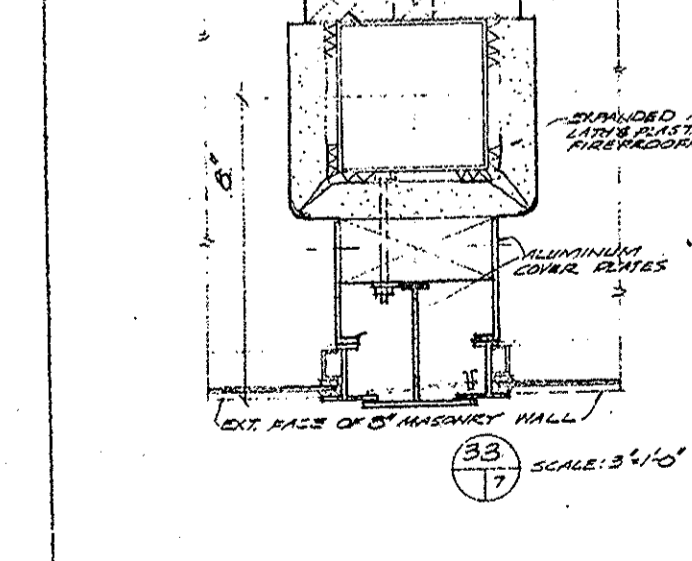
29 SCALE: 3/4" = 1'-0"



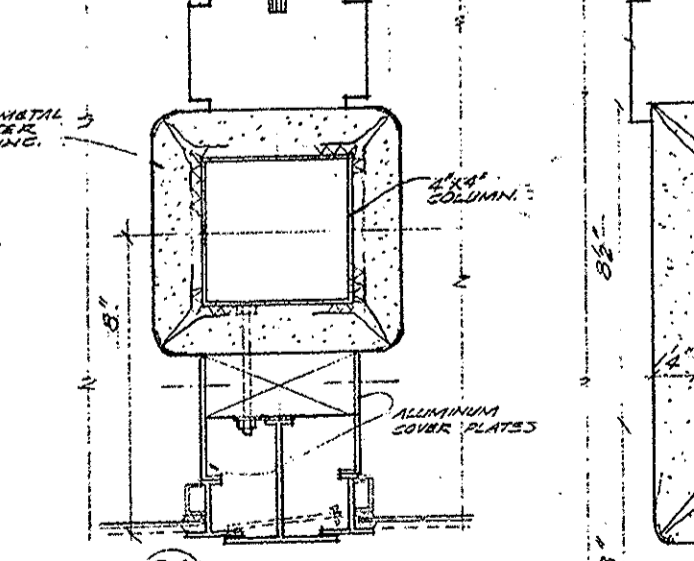
30 SCALE: 3/4" = 1'-0"



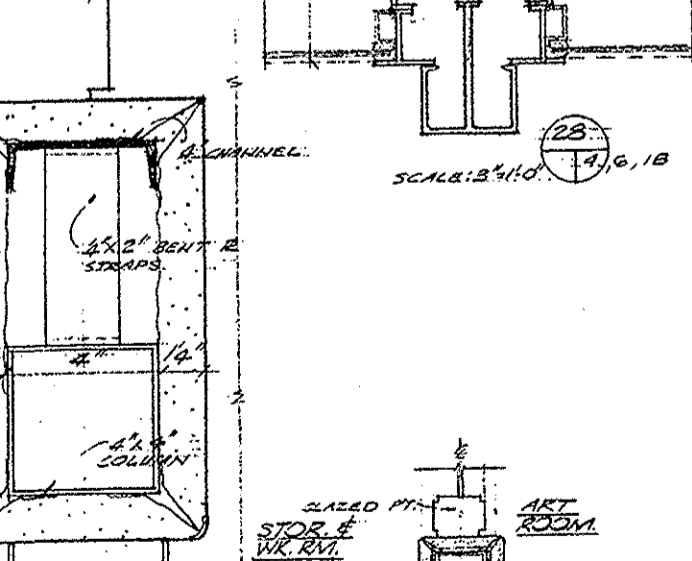
31 SCALE: 3/4" = 1'-0"



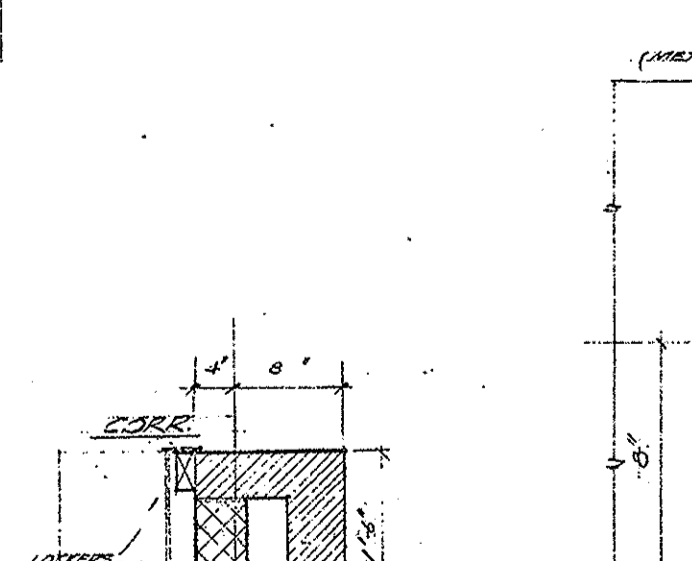
32 SCALE: 3/4" = 1'-0"



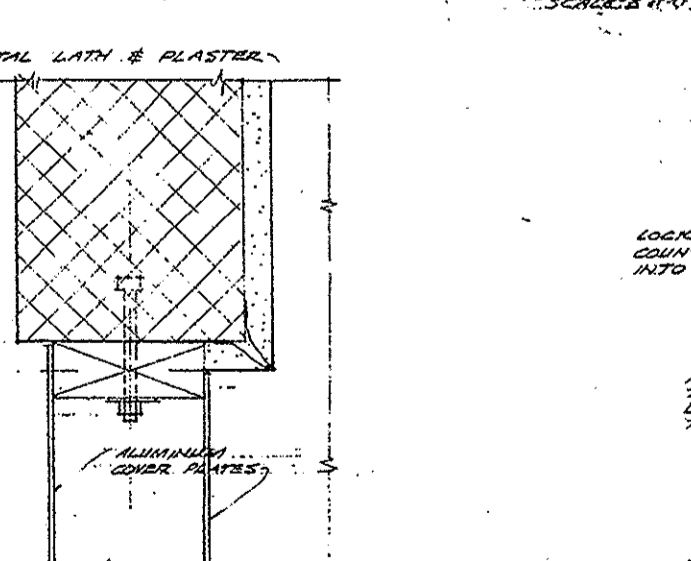
33 SCALE: 3/4" = 1'-0"



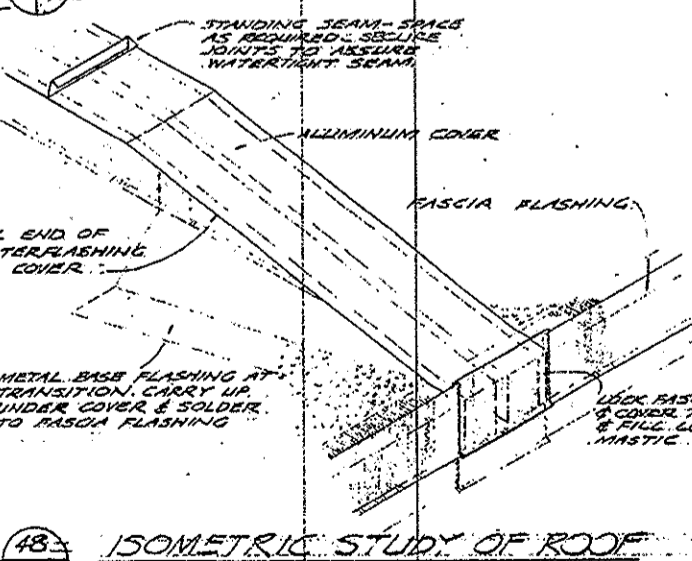
34 SCALE: 3/4" = 1'-0"



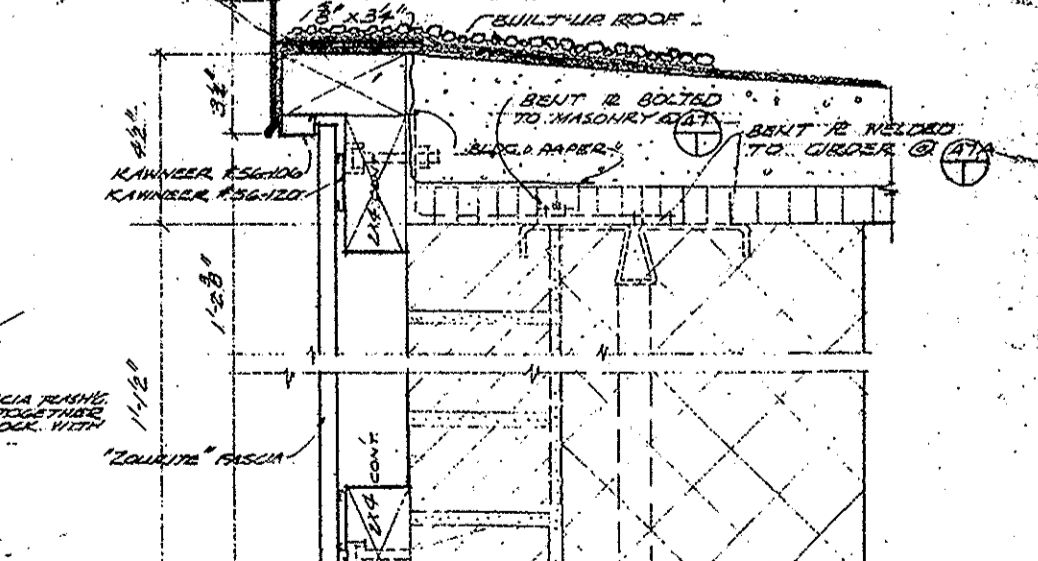
35 SCALE: 3/4" = 1'-0"



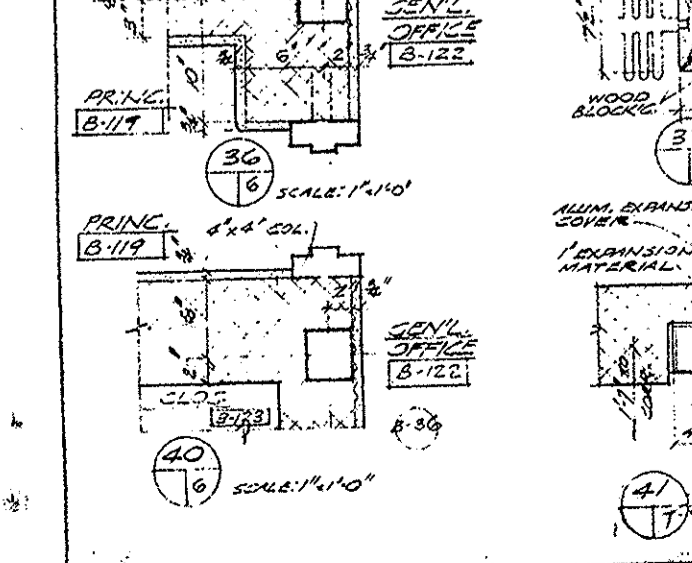
36 SCALE: 3/4" = 1'-0"



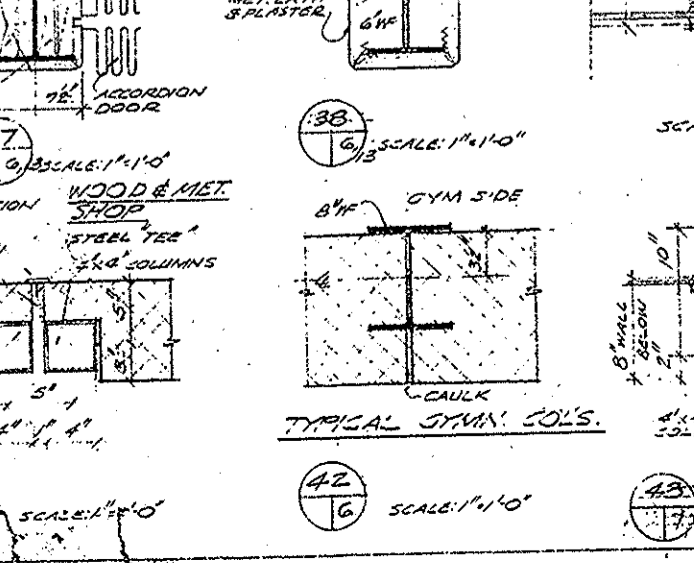
37 SCALE: 3/4" = 1'-0"



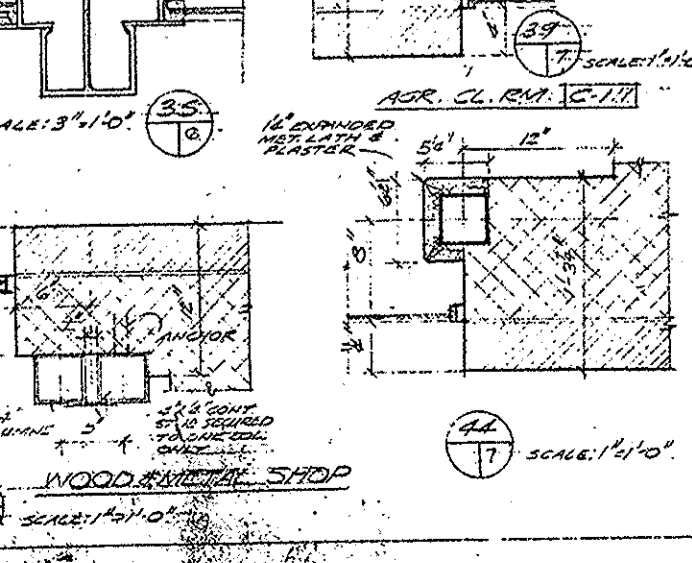
38 SCALE: 3/4" = 1'-0"



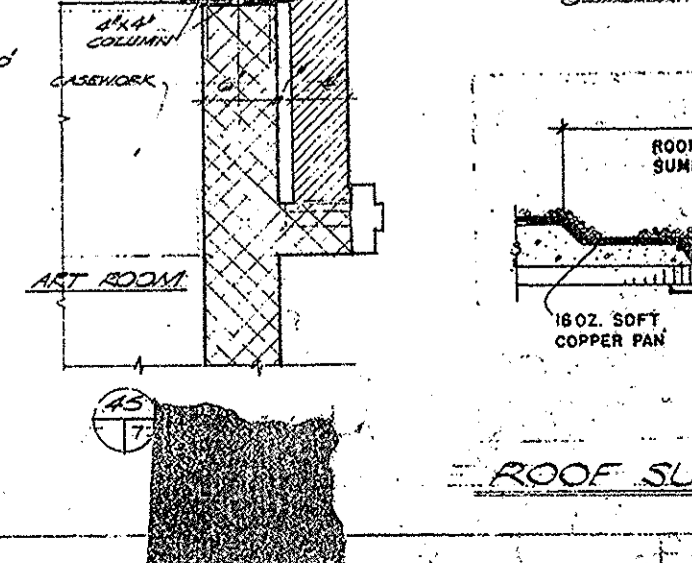
39 SCALE: 3/4" = 1'-0"



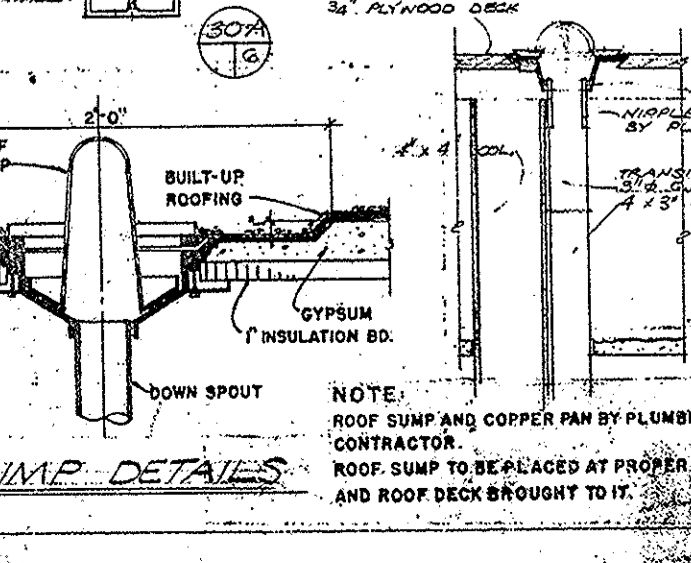
40 SCALE: 3/4" = 1'-0"



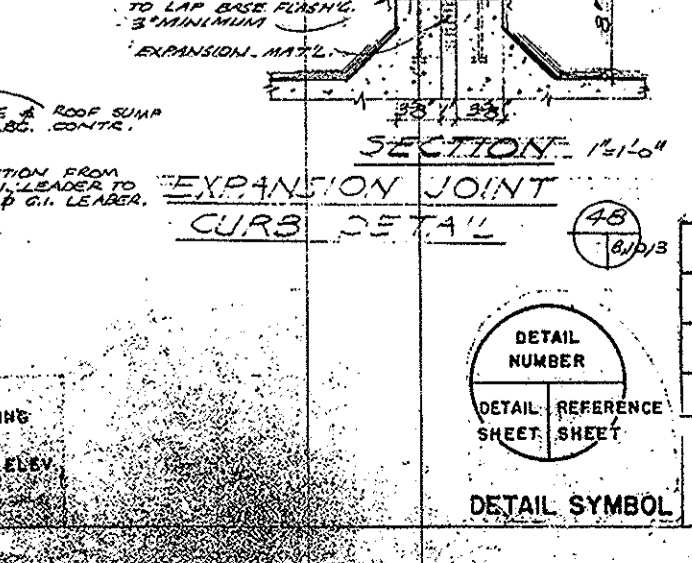
41 SCALE: 3/4" = 1'-0"



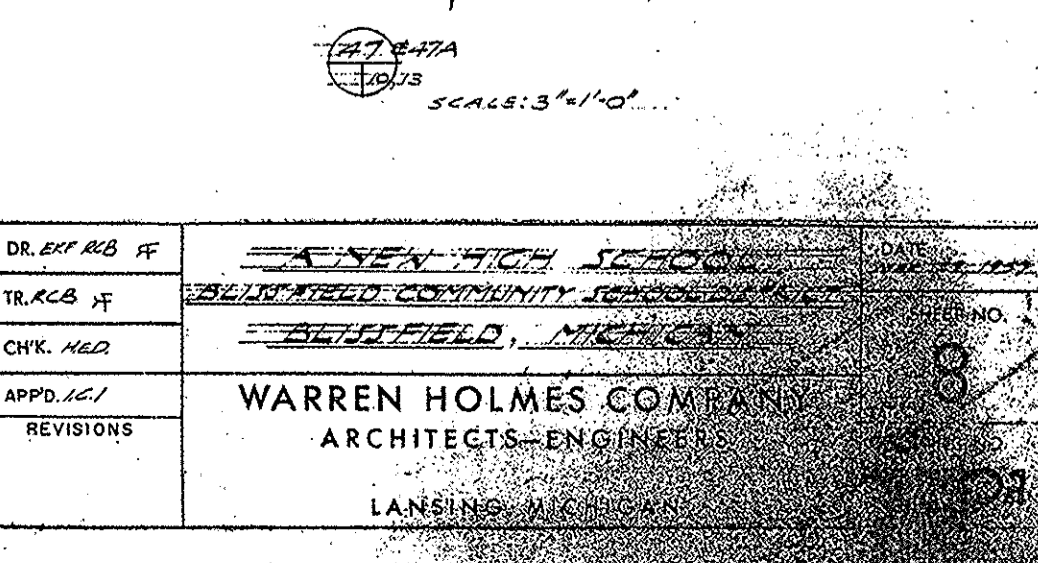
42 SCALE: 3/4" = 1'-0"



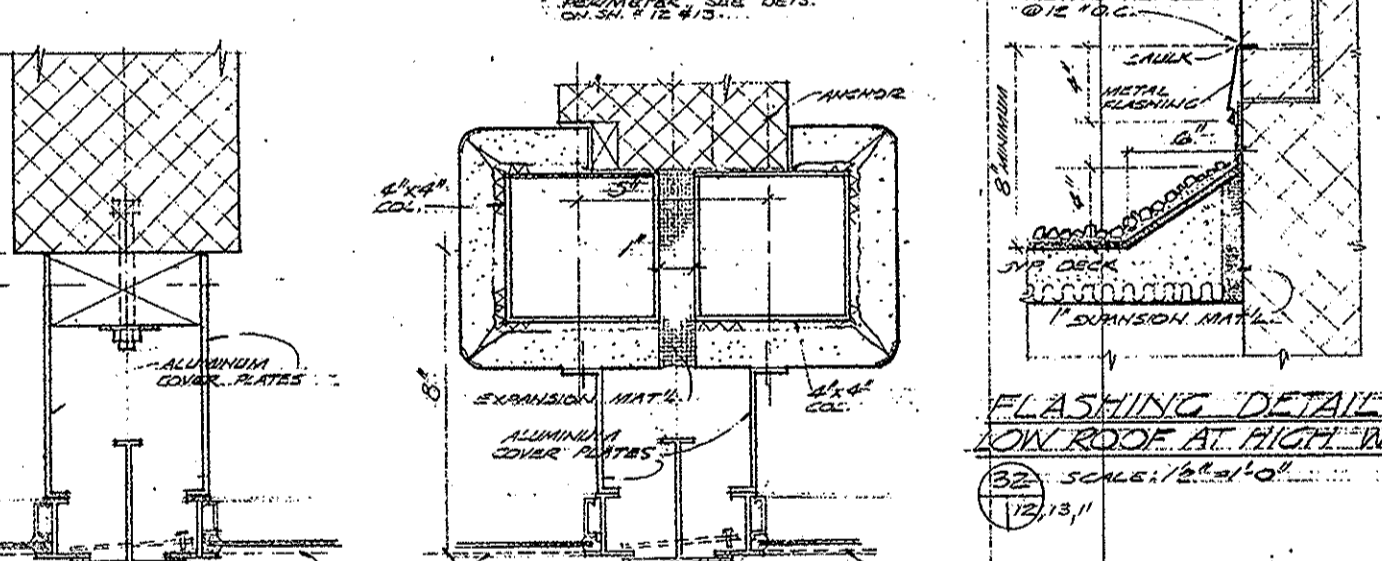
43 SCALE: 3/4" = 1'-0"



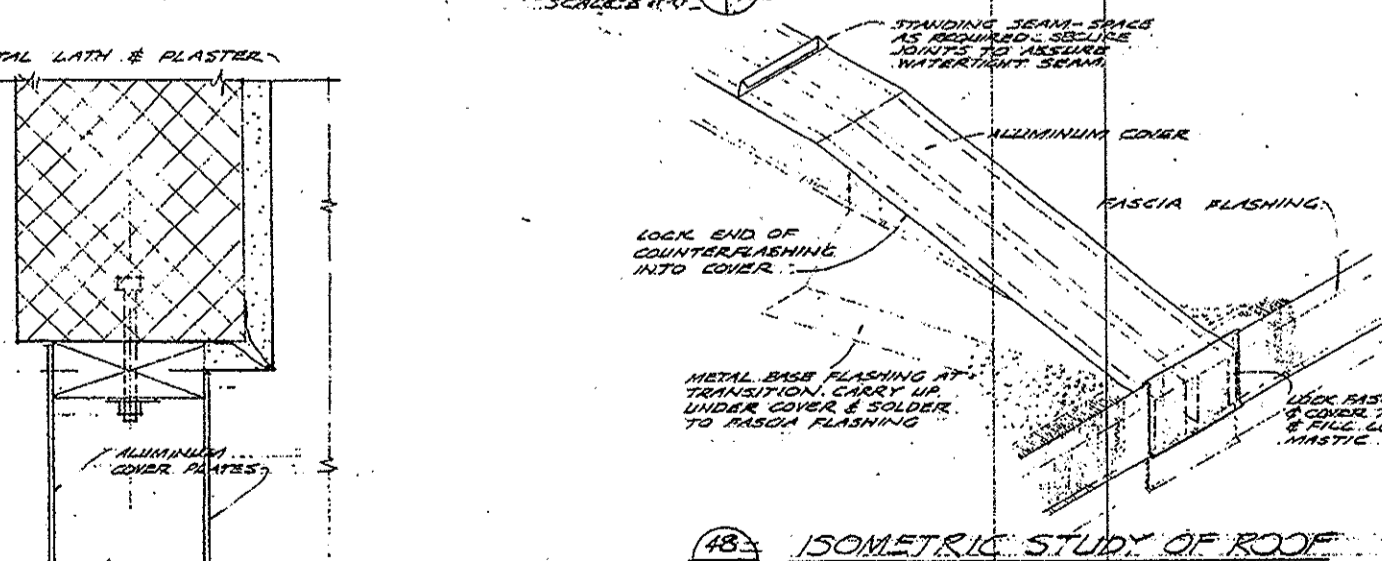
44 SCALE: 3/4" = 1'-0"



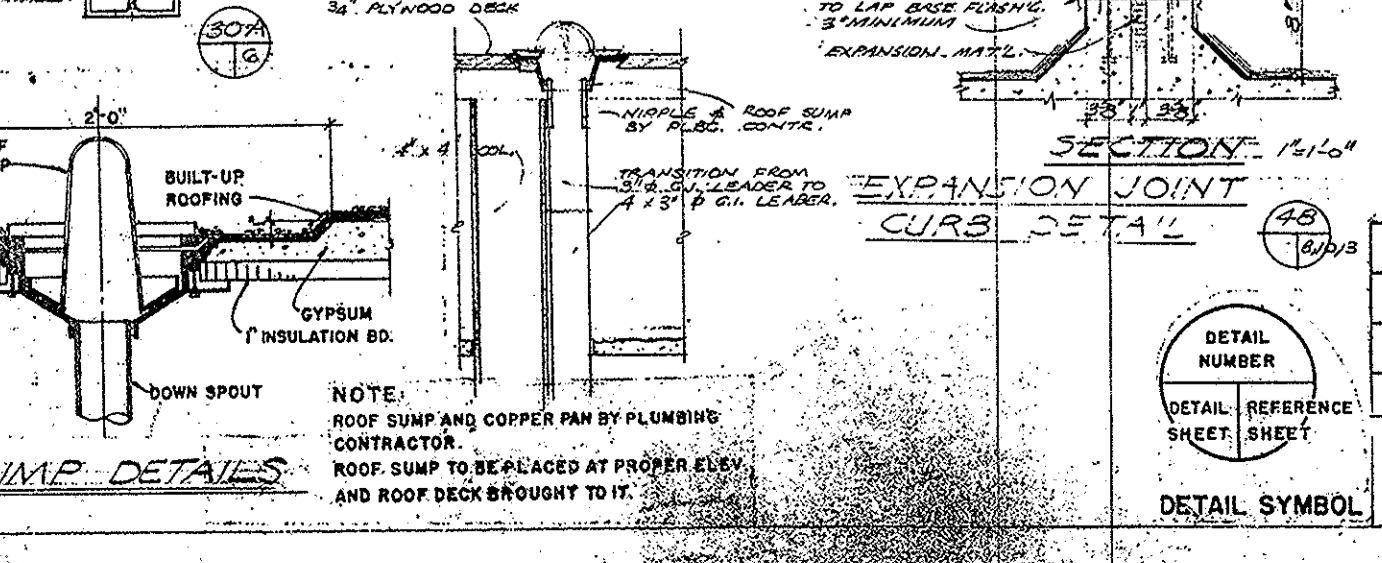
45 SCALE: 3/4" = 1'-0"



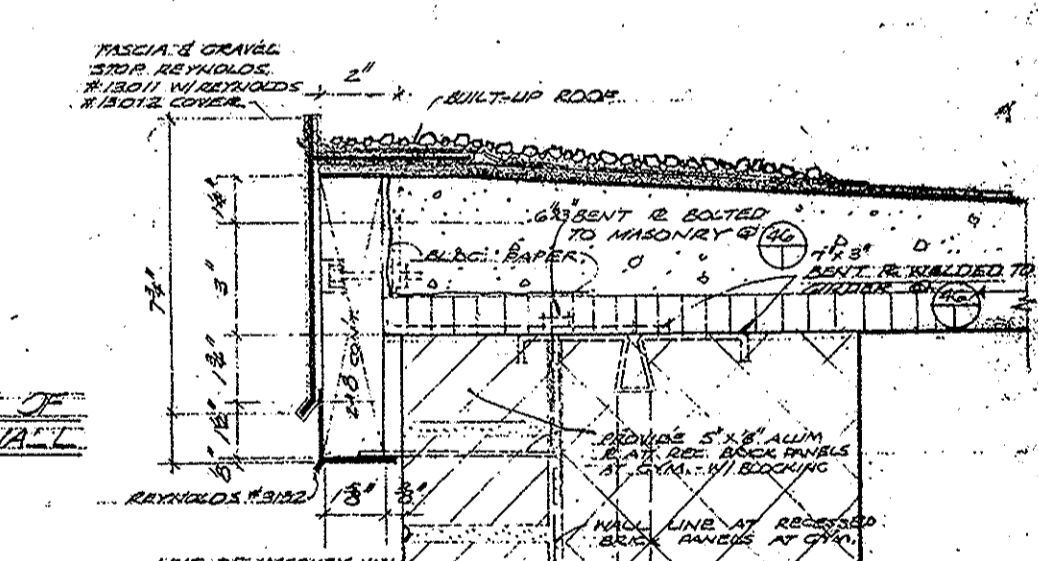
FLASHING DETAIL OF ROOF AT HIGH WALL. SCALE: 1/4" = 1'-0"



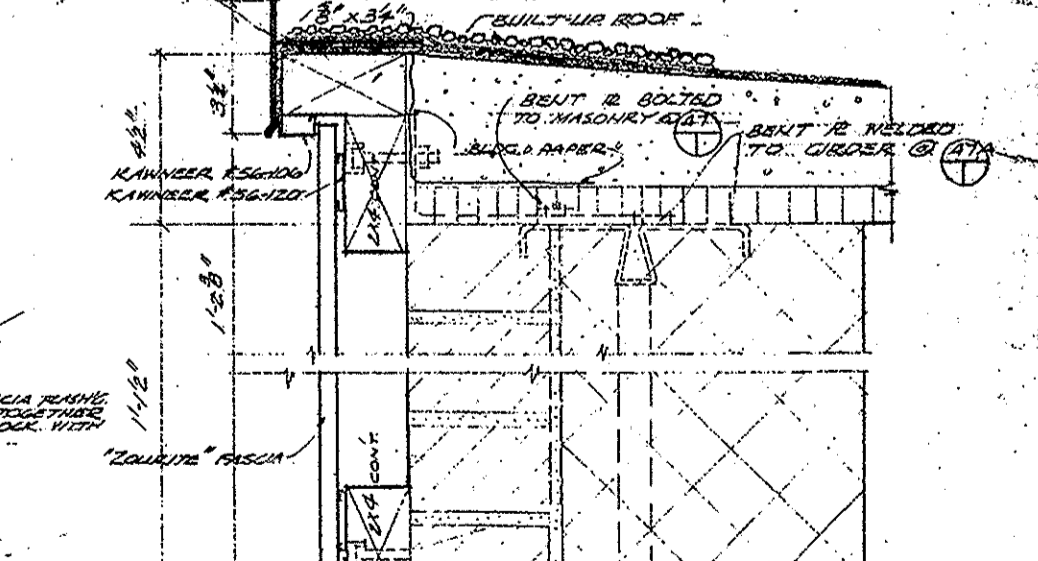
ISOMETRIC STUDY OF ROOF EXPANSION JOINT. SCALE: 1/4" = 1'-0"



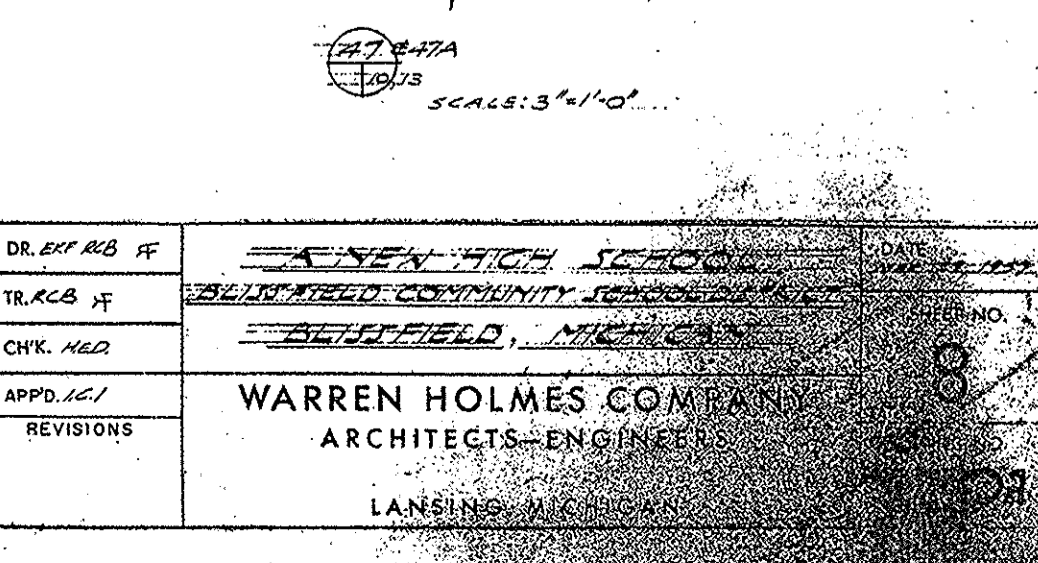
ROOF SUMP DETAILS. SCALE: 1/4" = 1'-0"



31 SCALE: 3/4" = 1'-0"



32 SCALE: 3/4" = 1'-0"



33 SCALE: 3/4" = 1'-0"

DR. BY	AS. BY	WARREN HOLMES & PARTNERS
TR. ACS	BY	WARREN HOLMES & PARTNERS
CHK. MLD	BY	WARREN HOLMES & PARTNERS
APPRO. LCI	BY	WARREN HOLMES & PARTNERS
REVISIONS		
WARREN HOLMES & PARTNERS ARCHITECTS-ENGINEERS		
LANSING, MICHIGAN		